

**S E C R E T**

Classification Authority

RESTRICTED by auth of

CO AAF STA 128 by

JACKSON M. PHIPPS,

Captain, Air Corps,

Adjutant.

# *REPORT OF OPERATIONAL DAY*

*MISSION NO. 136  
27TH. AUGUST, 1944*

*94TH. COMBAT BOMB WING  
401ST. BOMBARDMENT GROUP (H)*

*MISSION NO. 136*

*To: BERLIN , GERMANY*



401ST BOMBARDMENT GROUP (H)  
R E P O R T O F O P E R A T I O N A L  
D A Y  
MISSION SUMMARY REPORT

MISSION # 136

Date 27 August 1944

ASSIGNMENT

1. Assigned Target: BERLIN, GERMANY
2. Commitments: The 401st was to furnish a complete 36 A/C 94th "A" CBW, including 2 PFF A/C and three spares.

EXECUTION

1. Target Bombed: None
2. a. Wing Leader: Major J. W. MAUPIN (Carns)  
    Lead Navigator: 1st Lt. M. B. JEFFERY  
    Lead Bombardier: 2nd Lt. M. J. WIEGLER  
    b. High Box Leader: 1st Lt. R. M. FOWLER (Mannix)  
        Lead Navigator: 1st Lt. W. F. MALONEY  
        Lead Bombardier: F/O C. L. ROSTRUM  
    c. Low Box Leader: 1st Lt. C. J. PARR  
        Lead Navigator: 2nd Lt. G. E. HANSEN  
        Lead Bombardier: 2nd Lt. J. V. RIDLEY
3. Flight Over England:
  - a. Takeoff: Takeoff was a little late because of ground haze. One aircraft failed to take off (736) and was replaced by the flying spare.
  - b. Group and Wing Assemblies: Group and Wing assemblies were as briefed over Cottesmore with formation assembling fairly rapidly and in good fashion.
  - c. Route Over England: Course was a little north of course in order to lose time, and the Division Assembly Line was reached exactly right, the 94th "A" CBW falling into briefed 3rd position. Point "Z" was departed at altitude one minute late.

MISSION SUMMARY REPORT(Cont)4. Attack:

a. Flight to Target: Position in Division was maintained until reaching Denmark where weather was beginning to confuse formations. Recall message was received at 1348 (5558-0808E) and formations turned back. Route towards target was north of course over Denmark to avoid weather. The Wing was at about 13,000' when it turned back, it had to descend a couple of thousand feet below briefed altitude to avoid mid-air collision with another Wing.

b. Bombing Run: None.

c. Flight From Target: The formations turned toward the north before turning back and then the flight was flown north of course until reaching 5400-0500E at which point briefed route was picked up. No further trouble experienced by weather, etc., on return.

d. Return To Base: Return to base was normal and all A/C landed safely at home base.

e. Weather: Weather was as briefed over England and to climbing point. Tops were higher than briefed from that point on getting higher and higher -- 8/10-10/10ths over continental areas.

f. Fighter Support: Excellent.

g. Conclusions and Recommendations: None.

5. Aircraft Not Attacking:

All A/C airborne did not attack.

6. Enemy Opposition:

No air opposition (see Flak Report for Flak)

7. Battle Damage: None

8. Casualties: None

9. Statistical Summary of Operations: (see attached form)

10. Bombing Data:a. Disposition of Bombs:

Lead Box: 12 A/C returned 60 x 1000X M44 to base.

High Box: 13 A/C (incl 1 spare) returned 1230 x M17 Aim Clts. to base.

Low Box: 12 A/C returned 60 x 1000# M44 to base.



MISSION SUMMARY REPORT (Concl)

b. Observations:

All bombs were returned;

c. Tabular Summary of Disposition of Bombs:

	Aircraft		Bombs				
	Over Target	Bomb- ing	Num- ber	Size	Type	Fusing Nose Tail	
Main Bombfall	-	-	-	-	-	-	-
Other Attacks	-	-	-	0	-	-	-
Total Bombs On Targets			-	-	-	-	-
Other Expenditures			-	-	-	-	-
Bombs Returned			130	500#	M17 A/C	1/27	-
			120	1000#	M44	1/10	1/100
Total (Loaded on A/C Taking Off)			130	500#	M17 A/C	1/27	-
			120	1000#	M44	1/10	1/100

11. Lost Aircraft:

None.

Submitted By:

KEN W. DAUBLE  
 Captain, Air Corps  
 Statistical Officer



STATISTICAL SUMMARY OF OPERATIONS

401st Group

1st BD F. O. 481

Date of 27 August 1944

	LEAD		HIGH		LOW
		PFF - GH		PFF - GH	
1. No. of A/C Failing to Take Off	-		-		- 1
2. No. of A/C Airborne	10	2	13		12
3. No. of A/C Airborne Less Spares	10	2	13		12
4. No. of A/C Sorties	10	2	13		12
5. No. of A/C Attacking	-	-	-		-
6. No. of A/C Not Attacking	10	2	12		12
(a) Early Returns Included					
7. Name of Primary Target	BERLIN, GERMANY				
(a) No of A/C Attacking	-	-	-		-
(b) No., Size & type of bombs					
8. Name of Secondary Target					
(a) No of A/C Attacking					
(b) No., Size & type of Bombs					
9. Name of Last Resort Target					
(a) No. of A/C Attacking					
(b) No., Size & type of Bombs					
10. Name of Target of Opportunity					
(a) No. of A/C Attacking					
(b) No., Size, & type of Bombs					
11. Name of Target Opportunity					
(a) No. of A/C Attacking					
(b) No., Size & type of Bomb					
12. No of A/C Lost - TOTAL					
13. - to Flak					
14. - to Flak & E/A					
15. - to Enemy A/C					
16. - to Accident					
17. - to Unknown					



STAT SUMMARY (Cont'd)

	LEAD	HIGH	LOW
18. Time of Takeoff	1000	1004	1007
19. Time of Attack	-	-	-
20. Average Time of Flight	7.0	7.1	7.2
21. Altitude of Release	-	-	-
22. Visual or PFF	-	-	-
23. Enemy Resistance -- AA Int.&ACG.	NONE	NONE	NONE
24. -- Fighters	NONE	NONE	NONE
25. -- Bombers	NONE	NONE	NONE
26. U.S. A/C Engaged by Enemy A/C	NONE	NONE	NONE
27. Degree of Success	-	-	-

PFF A/C Borrowed from Groups as follows: NONE

PFF A/C Loaned to Groups as Follows:  
 NONE

NOTES:

MAJOR MAUPIN

27 August 1944

LT. LINCOLN

Combat Flight Leader

Date

Deputy Flight Leader

CARNS (MAUPIN)

PFF SQDN 600

61st Lt. Labwock  
61st Lt. Labwock, 94th "A"  
61st Lt. Labwock at Wakeoff & Cruise.  
614th IW GOLFCLUB  
615th IY BUZZARD

MAXWELL

LINCOLN

891

PFF 033

KNOX KNOT

LENFORD

SQDN 393

SQDN 938

GIBSON

BURNS

SISSON

SILVERSTEIN

993

992

084

662

LOUGHLIN

628

MOHLER

LUDEMAN

039

398

SPARES





HIGH BOX 94TH "A" WING

Combat Flight Leader LT FOWLER Date 27 Aug 44

Deputy Flight Leader \_\_\_\_\_

SQDN

- 612th SC JABWOCK
- 613th IN MACRO
- 614th IW GOLFCLUB
- 615th IY BUZZARD

MANNIK (FOWLER)

780

401ST HIGH BOX FORMATION  
AT TAKEOFF AND ON CRUISE

NELSON

LOCKHART

160

267

SQDN

SQDN

KONZE

LEWICK

146

602

SOMBART

KOCHIEL

MAYS

CROZIER

664

125

869

145

MC IIRAITH

468

COOPER

GRIMM

091

159

SPARES

UDY

330 (returned)

LT. PARR

27 August 1944

Combat Flight Leader

Date

LT. DUCKWORTH

Deputy Flight Leader

SQDN

612th SC JABWOCK

PARR /

613th IN MACRO

485

614th IW GOLFCLUB

615th IY BUZZARD

401st Low Box 94th "A"XXX  
Wing at Take-Off & Cruise

DOW /

DUCKWORTH

8077

957

SQDN

SQDN

JETTER /

KOONS /

947

395

THOMASON /

LIPPERT /

UTTER /

FILEMOR /

6113

790

659

012

~~LEMMONS~~  
~~KELLING~~

104

BUDD /

HANSON /

532

310

SPARES

~~LEWING~~

~~LEWING~~ A/C 7736 did not take-off.



HEADQUARTERS AAF STATION #128  
OFFICE OF THE NAVIGATION OFFICER

27 August 1944

SUBJECT: Lead Navigator's Narrative

TO : Commanding Officer, 401st Bombardment Group (H)

- 1. Flight plan, Log, and Track Chart Attached.
- 2. Narrative:

- a. T/O at 1000 hours; Land at 1700 hours.
- b. Group formed at 1054 hours at 5000 feet.
- c. Formed CBW at 1054 hours at 5000 feet.
- d. Began climb at 1230 hours; reached alt. at not reached hours.
- e. Weather encountered over England:
  - (1) Clouds 2 / 10th - Visibility 3 miles.
  - (2) Wind at altitude 250 degrees, 36 Knots.
- f. Means of navigation over England, Gee, Radio
- g. Means of checking Metro Winds Gee, Mickey
- h. Joined task force at 1108 hrs. at Spaulding to Louth  
(Splasher, City, Coord.)
- i. English Coast out at 1123 hrs.; Enemy Coast in at 1330 hrs.
- j. Fighter Rendezvous:
  - (1) Going in 1322 hrs.
  - (2) Coming back \_\_\_\_\_ hrs.
- k. Wind used for bombing:
  - (1) \_\_\_\_\_ degrees, No bombing Knots.
  - (2) Determined by \_\_\_\_\_  
(Method)
- l. Bomb run and Method of Target Identification:
  - (1) Reached IP at \_\_\_\_\_ hrs. No bombing
  - (2) Mag. heading over target \_\_\_\_\_ degrees.
  - (3) Altitude over target \_\_\_\_\_ feet.
  - (4) Bombs away at \_\_\_\_\_ hrs.
  - (5) Method of target identification and weather over target.  
Weather over channel 10/10ths, tops 5000'  
" " Denmark 7-8/10ths.
- m. Gee:
  - (1) Coordinates of furthest fix 54-13 N-06-37 E.
  - (2) Obtained at 1258 hours.
- n. Difficulties encountered with special equipment.

COMMENTS: Mission recalled

/s/ M. B. Jeffery  
M. B. JEFFERY  
1st Lt., A. C.  
Lead Navig., Lead-Box  
SIGNATURE



HEADQUARTERS AAF STATION #128  
OFFICE OF THE NAVIGATION OFFICER

1944

~~27 August~~

SUBJECT: Lead Navigator's Narrative

TO : Commanding Officer, 401st Bombardment Group (H)

1. Flight plan, Log, and Track Chart Attached.

2. Narrative:

a. T/O at 1004 hours; Land at 1710 hours.

b. Group formed at 1054 hours at 4000 feet.

c. Formed CBW at 1054 hours at 4000 feet.

d. Began climb at 1210 hours; reached alt. at \_\_\_\_\_ hours.

e. Weather encountered over England:

(1) Clouds 3 / 10th - Visibility 5 miles.

(2) Wind at altitude 140 degrees, 34 Knots.

f. Means of navigation over England, Gee, Pilotage

g. Means of checking Metro Winds Gee

h. Joined task force at 1110 hrs. at Spaulding  
(Splasher, City, Coord.)

i. English Coast out at 1121 hrs.; Enemy Coast in at 1335 hrs.

j. Fighter Rendezvous:

(1) Going in 1335 hrs.

(2) Coming back \_\_\_\_\_ hrs.

k. Wind used for bombing: No bombing

(1) \_\_\_\_\_ degrees, \_\_\_\_\_ Knots.

(2) Determined by \_\_\_\_\_  
(Method)

l. Bomb run and Method of Target Identification:

(1) Reached IP at \_\_\_\_\_ hrs. No bombing

(2) Mag. heading over target \_\_\_\_\_ degrees.

(3) Altitude over target \_\_\_\_\_ feet.

(4) Bombs away at \_\_\_\_\_ hrs.

(5) Method of target identification and weather over target.

10/10ths

m. Gee:

(1) Coordinates of furthest fix 56-00 N. 08-10 E.

(2) Obtained at 1350 hours.

n. Difficulties encountered with special equipment.

COMMENTS:

/s/ G. E. Hansen  
G. E. HANSEN  
1st Lt. A. C.  
Lead Navigator, Low Box



HEADQUARTERS AAF STATION #128  
OFFICE OF THE NAVIGATION OFFICER

27 August 1944

SUBJECT: Lead Navigator's Narrative

TO : Commanding Officer, 401st Bombardment Group (H)

1. Flight plan, Log, and Track Chart Attached.

2. Narrative:

a. T/O at 1007 hours; Land at 1720 hours.

b. Group formed at 1056 hours at 5600 feet.

c. Formed CBW at 1056 hours at 5600 feet.

d. Began climb at 1152 hours; reached alt. at \_\_\_\_\_ hours.

e. Weather encountered over England:

(1) Clouds 3 / 10th - Visability 5 miles.

(2) Wind at altitude 200 degrees, 25 Knots.

f. Means of navigation over England. Gee, Pilotage

g. Means of checking Metro Winds Gee

h. Joined task force at 1108 hrs. at Spaulding  
(Splasher, City, Coord.)

i. English Coast out at 1122 1/2 hrs.; Enemy Coast in at 1333 hrs.

j. Fighter Rendezvous:

(1) Going in 1330 hrs.

(2) Coming back \_\_\_\_\_ hrs.

k. Wind used for bombing: Did not bomb

(1) \_\_\_\_\_ degrees, \_\_\_\_\_ Knots.

(2) Determined by \_\_\_\_\_  
(Method)

l. Bomb run and Method of Target Identification:

(1) Reached IP at \_\_\_\_\_ hrs. Did not reach target

(2) Mag. heading over target \_\_\_\_\_ degrees.

(3) Altitude over target \_\_\_\_\_ feet.

(4) Bombs away at \_\_\_\_\_ hrs.

(5) Method of target identification and weather over target.

8 - 10/10ths undercast

m. Gee:

(1) Coordinates of furthest fix 54-07 N. 06-16 E.

(2) Obtained at 1246 hours.

n. Difficulties encountered with special equipment.

COMMENTS:

/s/ W. F. Maloney  
W. F. MALONEY  
1st Lt., A. C.  
Lead Navigator, High Box



FLIGHT PLAN

PILOT Lt. Caron NAVIGATOR Lt Malone, Lt. Jeffery DATE 27 August 1944

STATIONS	0730	ENGINES	0730	TAXI	0935	T.O.	0950
LEAVE BASE	COTTESMORE 1054						
COAST OUT	1112						
ENEMY COAST	1335						
I.P.	1519						
TARGET	1535						
ENEMY COAST	1748						
ENEMY COAST	1838						
ETA	1906						

SUN		MOON		TWILIGHT	
Rises	Sets	Rises	Sets	AM	PM

Zero Hr. - 1100  
Ref. Alt. - 22000  
Bomb Alt - 26000  
CBW Int. - 2 min.  
Oxygen - 3 hrs.  
Div. Assembly - Spaulding to Louth

WATCH Letdown on Cottessmore buncher  
Fast Slow RATE secs/hour Gaining Losing  
At 360 315 015 C.M.T.

FROM TO	W/V UESD	HEIGHT	I.A.S. MPH /K	T. A.S. (K)	COURSE	DRI-FT	TRUE HDNC.	VAR.	MAG. HDNC.	G. S.	DIST.	TIME	E.T.A.	CELESTIAL DATA			
														TIME	BODY	ALT.	AZI.
Assembly on Cottessmore buncher	160/20	5000	150	142									1054				
51-44N 00-39W (Y)	"	"	150	142	100	A3	103	10	113	136	18	8	1102				
51-44N 00-39W (A)	"	"	150	142	007	A2	809	10	019	150	6	3A	1106				
51-41N 01-10W Spaulding (Z)	"	"	"	"	10	A2	12	10	22	150	36	15	1121	C.P. 1	1121		
51-47N 00-09W Louth C.P. 1	"	"	"	"	70	A	82	9	91	139	182	1:20	1241				
51-40N 10-00	196/13	150	150	154	77	A	61	A6	67	159	180	1:08	1349	C.P. 2	1328		
51-35N 11-04E	200/15	150	150	168	100	A5	105	A5	110	170	38	14	1403	C.P. 3	1357		
51-17N 13-18E	200/17	180	150	172	110	A6	116	A	130	171	47	17	1430				
51-52N 11-22E	200/22	250	150	188	140	A6	146	A3	149	176	112	30	1458	C.P. 4	1455		
51-10N 14-15E	200/25	260	150	200	184	A2	188	A3	191	175	42	15	1513				
51-00N 13-40E	200/26	260	150	202	257	-6	251	A3	254	187	1 8	06	1519				
51-20N 13-31E	200/26	260	150	"	335	-5	330	A3	333	220	22	06	1525				
51-34N 13-52E	200/26	260	150	"	59	A5	64	A3	67	221	16	05	1530				
51-00N 13-10E	200/26	260	150	"	315	-7	308	A3	311	211	37	11	1541				
51-28N 11-21E	200/23	250	170	218	306	-6	300	A	302	222	22	23	1604	C. P. 5	1606		
51-07N 11-04E	200/17	150	170	199	348	-3	345	A	349	212	46	13	1617				
51-40N 10-00E	200/15	150	150	168	200	-5	175	A5	200	164	38	14	1631				
51-00N 05-20E	190/13	150	170	176	257	-4	253	A	259	168	180	1:05	1736				
Ordnance	160/20	150	150	143	214	-4	210	A9	219	141	145	1:02	1838				
Home	100/8	2000	150	159	250	-2	248	A10	258	165	75	28	1906				

110 51-04N 00-14E 160/20 0 to 2000 150 142 29 A 33 10 43 145 61 26 1055 1121

FLIGHT RECORD

TIME	COURSE	W/V USED &/OR D.R. DRIF.	TRUE HDNC.	MAG. HDNC.	NAVIGATIONAL OBSERVATION	GENERAL OBSERVATION	I.A.S. MPH /K	HEIGHT & AIR TEMP.	T. A.S.	RUN		TO RUN		E.T.A.
										DIST.	TIME	G. S.	DIST.	
					Emergency airframe: Washington 51-12N 01-20W, Langdon 51-06N 00-52E									
					Sparcs return - 03:00 VIF authentication - "Blue grass" Abandon mission - "Flow your horn" S.O.P. 1st Joint Div Assembly - 2 English Coast C.P. 1 Chaff - 2 min before I.P. for 15 min.									
1000					Take off									
1054			203		5 mi. S-E of field		150	5000						
1057			118											
1103			35		78. "0", lead wings spotted									
1104			009		to C. P. #1		150	5000						
1110			004											
1120			082		Louth, on course, 1 min early		150	5000	142					
1123			100		51-25N 00-15E, English Coast		150	5000						
1127			82		51-28N 00-12E A. P.		150	5000	143					
1135		199/30E	82		C. 51-34N 01-17E									
1140			82		51-52N 01-25E									

FLIGHT RECORD



FLIGHT RECORD

TIME	COURSE	W/V USED &/OR D.R. DRIF.	TRUE HDNC.	MAG. HDNC.	NAVIGATIONAL OBSERVATION	GENERAL OBSERVATION	IAS. MPH. /K	HEIGHT & AIR TEMP.	T.A.S.	RUN		C. S.	TO RUN		E.T.A.
										DIST.	TIME		DIST.	TIME	
1146					53-37N 01-21E										
1155		140/28	48		53-33N 02-44E A.P. Division turning left, climbing		170 5000			44	20	130			
1158			48												
1204			124		53-40N 03-28E S-ing to loss time		170 7000			19	9	127			
1214			80 (av)		53-50N 03-40E		170 7500			28	10	168			1232
1221			100		53-48N 04-12E, G					24	7	120	31	16	1237
1230			60				170 8300								
1233			90		54-00N 04-56E Still S-ing, 8 min early		170 8500								
1239			88		started climb 54-00N 05-14E										
1244			80		54-03N 05-27E		170 10200								Coast
1252			90				170 12000					180	127	42	1236
1258			82		54-13N 06-37E		170 13000					180	85	28	1225
1310			67												
1315					Turning north										
1322			360		61F sight 54-53N 08-08E		170 14000								
1329			55		Turning right and climbing										
1334			60												
1348			225		55-50N 08-08E, heading home		170 13500								
1357	270	-10	220												
1358			220	226											
1401			223	229	126°, 32 mi west of Isbjerg. Descending		170 12500								
1403			225	232	115°, 33 mi. from Isbjerg		160 11700								
1406	225	10	225		107, 36 mi from Isbjerg		150 11500	155							
1408	215				1000, 301		150 10500	155				165			
1416	235	-10	225	232			190 10500	155	182	1:10	155				1500
1420				232	55-08N 06-15E D.R. Receive sp. #5 on radio.		170 10300	160	82	32	155				
1430				225											
1433				225											
1440				225	D.R. 54-46N 05-35E, G, 54-46N 06-10E					113	52	130			
1443				225	54-37N 05-37E, G.		170 10000								
1445			265		Thin clouds										
1453				265	160° 65 mi.										
1500				225	54-27N 05-15E										
1507	223	10	245		54-20N 04-30E							130			Coast 1610
1530				250	5 large ships, 5 small ships 53-40N 03-50E										
1530	230	10	240	248	G. 53-41N 03-40E approx 2 mi N. of course sp #5 on radio contact.		170 8500		X			130			
1541				240	53-32N 03-08E		170 8200								
1547				233	53-35N 02-50E Base		170 8100								Coast 1612
1553			231	240	53-26N 02-32E		170 8000								
1618				255	English Coast at Croner		170 3500								
1640				260	54-40N 00-20E, heading on King's Cliff		170 2000								
1651				230	Clear base										

SIGNED \_\_\_\_\_ NAVIGATOR



# TRACK CHART

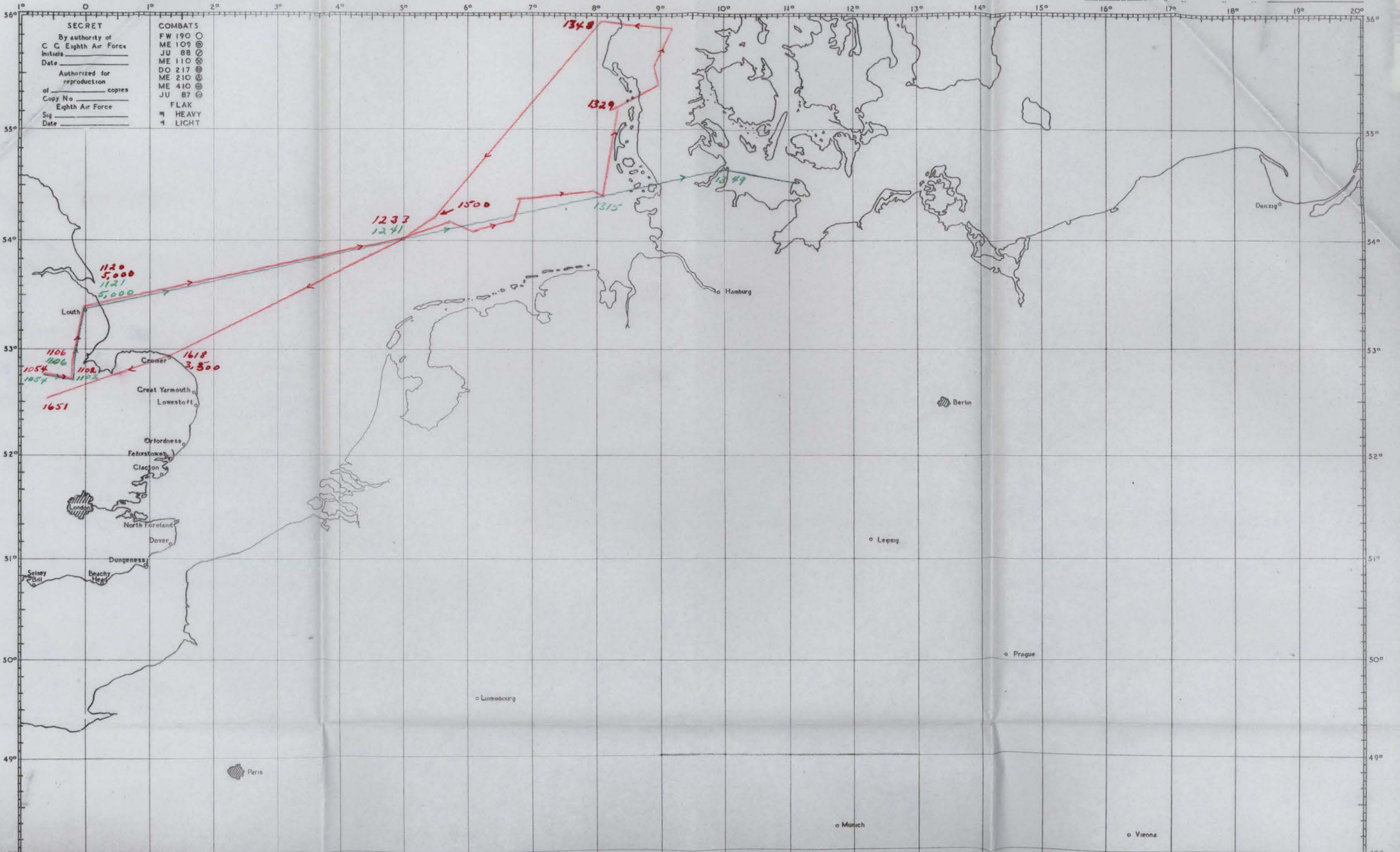
DATE *Apr. 27, 1944*

TARGETS  
PRIMARY

*Berlin, Germany*

*Green* ROUTE FOLLOWED BY *Direct Course*

*Red* .. .. . *101st B.G. (H)*



SECRET  
By authority of  
C. C. Eighth Air Force  
Initials \_\_\_\_\_  
Date \_\_\_\_\_  
Authorized for  
reproduction  
of \_\_\_\_\_ copies  
Copy No. \_\_\_\_\_  
Eighth Air Force  
Sig \_\_\_\_\_  
Date \_\_\_\_\_

COMBAT S  
FW 190 ○  
ME 109 ⊙  
JU 88 ⊙  
ME 110 ⊙  
DO 217 ⊙  
ME 210 ⊙  
ME 410 ⊙  
JU 87 ⊙  
FLAK  
HEAVY  
LIGHT



Initials \_\_\_\_\_  
 Date \_\_\_\_\_  
 Authorized for reproduction \_\_\_\_\_  
 of \_\_\_\_\_ copies  
 Copy No \_\_\_\_\_  
 Eighth Air Force  
 Sig \_\_\_\_\_  
 Date \_\_\_\_\_

JU 88 ⊗  
 ME 110 ⊗  
 DO 217 ⊗  
 ME 210 ⊗  
 ME 410 ⊗  
 JU 87 ⊗  
 FLAK  
 HEAVY  
 LIGHT



DECLASSIFIED PER NND 715  
 BY PZ NARA DATE 1/11/01



Target No.  
3 (e) 95

FOCKE-WULF FLUGZEUGBAU A.G.,  
Etc.

BERLIN (Johannisthal)  
(GERMANY)

Illustration No.  
3 (e) 95/5

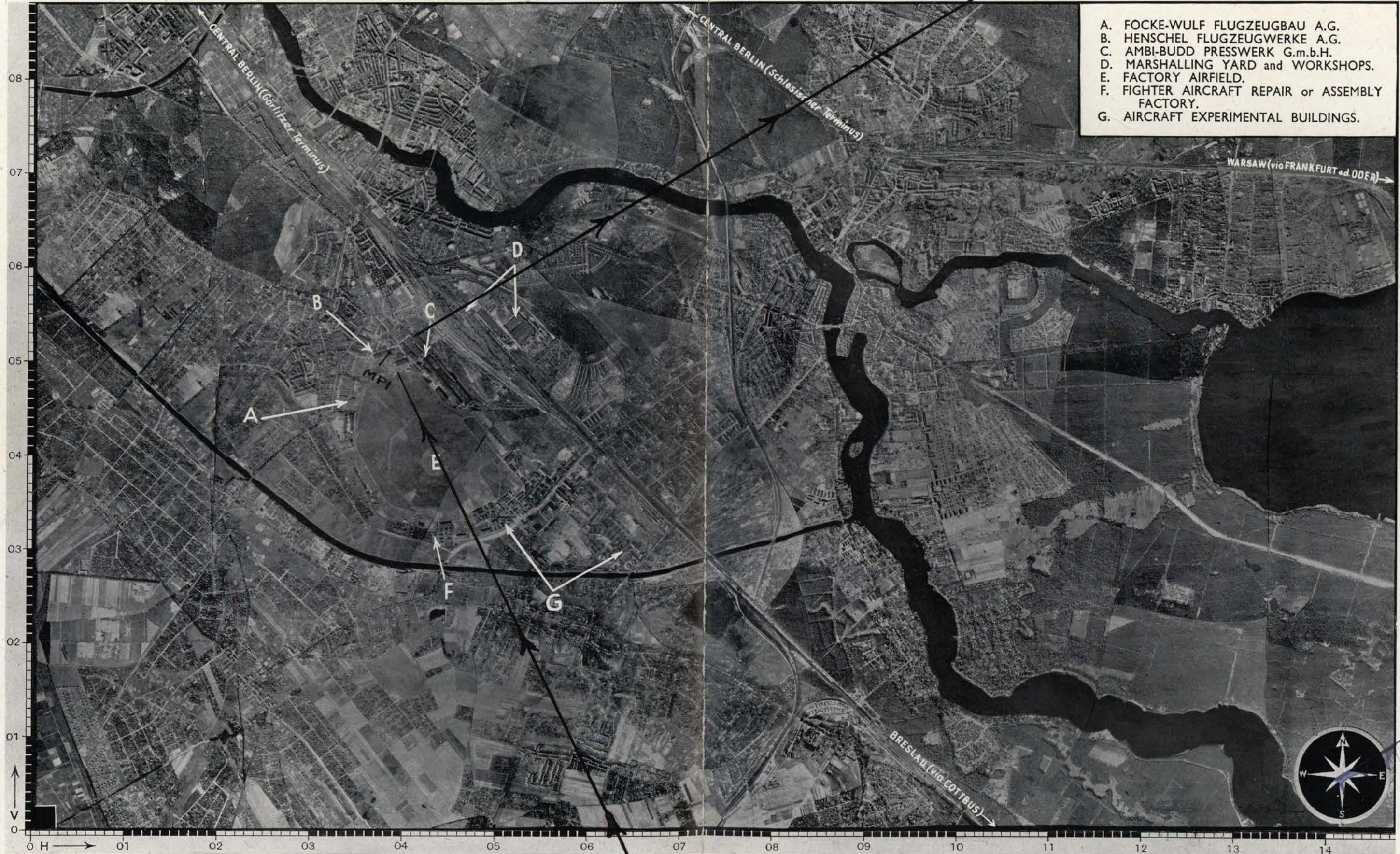
Illustration No.  
3 (e) 95/5

0 500 1000 1500 2000 YARDS  
0 1/2 1 MILE

Photographed 1943

(1 : 32,000) approx.

Issued May 1944



- A. FOCKE-WULF FLUGZEUGBAU A.G.
- B. HENSCHEL FLUGZEUGWERKE A.G.
- C. AMBI-BUDD PRESSWERK G.m.b.H.
- D. MARSHALLING YARD and WORKSHOPS.
- E. FACTORY AIRFIELD.
- F. FIGHTER AIRCRAFT REPAIR or ASSEMBLY FACTORY.
- G. AIRCRAFT EXPERIMENTAL BUILDINGS.

TYPE A

A.1.3c (1)

DECLASSIFIED PER NND 741005  
BY A2 NARA DATE 1/22/11



HEADQUARTERS  
 401ST BOMBARDMENT GROUP (H)  
 Office of the Communications Officer  
 AAF Sta 128, APO 557

J-A-1

Reference Field Order 481.

28 AUGUST 1944

SUBJECT: Communications Report, Operational Mission No \_\_\_\_\_.

TO : Commanding Officer, 401st Bomb Gp (H), AAF Sta 128, APO 557.

SECTION ONE - USE OF RADIO NAVIGATIONAL AIDS

- |                             |   |
|-----------------------------|---|
| 1. VHF/DF Bearings:         | 5. Radio Beacons used:                  |
| to 401st A/G <u>∅</u>       | Splashers <u>INFO NOT AVAILABLE</u>     |
| to other A/C <u>∅</u>       | Fixed Beacons <u>INFO NOT AVAILABLE</u> |
| 2. HF/DF Bearings <u>∅</u>  | Bunchers <u>INFO NOT AVAILABLE</u>      |
| 3. MF/DF Fixes <u>∅</u>     | 6. Total A/C using Gee <u>36</u>        |
| 4. Distress Action <u>∅</u> | Maximum Fix <u>5330M-0500E</u>          |

SECTION TWO - REPORTED EQUIPMENT DEFICIENCIES

- |                     |                                   |
|---------------------|-----------------------------------|
| 1. Liaison <u>2</u> | 5. Interphone <u>1</u>            |
| 2. Command <u>∅</u> | 6. Gee <u>∅</u>                   |
| 3. VHF <u>∅</u>     | 7. IFF <u>∅</u>                   |
| 4. Compass <u>∅</u> | 8. <del>XXXXXX</del> H2X <u>∅</u> |

SECTION THREE - REMARKS

BROKEN VHF SAFETIED SWITCHES:

947 - TRANSMITTED TO ANOTHER A/C TO GET BACK IN FORMATION

\_\_\_\_\_

\_\_\_\_\_

HAROLD M. KENNARD, JR.  
 Capt, Air Corps,  
 Gp Comm O.



S E C R E T

Report A.A. Gunfire.

401st BOMBARDMENT GROUP (H)

Assigned . . . . . Berlin  
Target: Bombed . . . . . Berlin *low* Date of Mission 27 Aug. 44

Route as Flown:-

**As briefed over N. Sea, turning north over N. Frisian Islands, East of Esbjaerg, back over north sea.**

Weather conditions: (a) At target . . . . .  
(b) En route 8-10/10, solid over continent.  
Were our A/C "Seen" or "Unseen" targets? (a) At target . . . . .  
(b) En route Unseen  
Any condensation trails? . . . . .

Description of Flak at Target, including METHOD OF FIRE CONTROL

**NONE**

Flak encountered or observed en route. (In the order experienced)

**1316 hours - N. Frisian Islands - meagre, black, tracking encountered.  
1355 hours - Esbjaerg - meagre, black, tracking encountered.**

was CHAFF carried? No& discharged.  
How discharged? . . . . .

Position of Group 94th "A" CBW

Details:-

	A/C over enemy territory	A/C Damaged	A/C lost to flak	Time over Target	Time of Bombs away	Height	Axis of Attack	Bomb Run
Lead	12	0	0	0	0	0	0	0
High	12	0	0	0	0	0	0	0
Low	12	0	0	0	0	0	0	0
ls								

Comments - Phenomena:-

Lt. D.V. McCallum

S E C R E T



HEADQUARTERS  
401ST BOMBARDMENT GROUP (H)  
Office of the Engineering Officer  
AAF Station 128

F-C-1

APO 557  
27 August 1944

**SUBJECT:** Armament Malfunction Mission Report.

**TO :** Commanding General, 1st Bomb Division, APO 557.  
**ATTN:** Division Armament Officer.

1. Date of Mission: 27 August 1944.
2. No gun malfunctions were reported.
3. No turret malfunctions were reported.
4. No bombing equipment malfunctions were reported.
5. There were twenty-two (22) aircraft equipped with the all-electric bomb release system participating in the mission.

SAM P. BROOMHALL, JR.,  
1st Lt., Air Corps,  
Group Armament Officer.



## BRIEFING NOTES ( 27 August 1944)

TARGET: Your Primary Visual target is a complex of several <sup>targets</sup> ~~operations~~ consisting of a Focke-Wulf works, Henschel Aircraft works, a works for manufacture of dies, tools and fixtures for aircraft industry, the Marshalling Yard and the Factory Airfield. Your particular <sup>MPI</sup> ~~target~~ is on the Assembly Shop of the Henschel factory. This target (other major plant being bombed by ~~not~~ the 1st BD), was reported originally to be an experimental works. In 1943 it was apparently assembling Hs. 129's and may still be doing so.

Two Wings, yours and one other, are all bombing the same MPI at this target and this MPI is listed as the primary vital point to hit. Your pattern should effectively cover the majority of the works. You will be bombing as the second wing on this MPI.

~~SECONDARY (Visual) (5243N-1325E) This is an important Aero-engine factory which manufactures the BMW radial engine which is used in the FW-190 fighter. Your MPI is one of four assigned for this target for four Wings and will be one of the complex of four workshops where the manufacture of this engine takes place. This plant is the second most important producer of this engine for the FW-190 which explains its importance, and if the MPI's are hit all series production at this plant can be knocked out.~~

~~SECONDARY LAST RESORT VISUAL: An airdrome which we have no poop on, it.~~

FRIENDLY ACTIVITIES -- 8 CBW's of 3rd attacking 4 targets in Berlin Area.  
12 CBW's of 2nd " 4 targets in Hamburg Area.

10 CBW's (nine other) of 1st BD hitting 3 targets (4 on ours)

## ROUTE AND ESCORT:

EPISCOPE\* Flak  
Lead Bombardier

LMI---- Expect Convoys

Spec Instr.

P/W-- Procedure in Sweden also

G.I. Shoes, dog-tags, empty pockets, escape kit and purse,  
adjust harness, etc.

Lt. Hamrick



# CONFIDENTIAL

HEADQUARTERS  
401st BOMBARDMENT GROUP (H)  
Office of the Staff Weather Officer  
APO 557, U. S. Army

27 August 1944

## WEATHER INTERROGATION SUMMARY FOR MISSION OF 27 AUGUST 1944

TAKE-OFF: 1000. Dense ground fog, top 750'. Haze layer extending up to 4000'. 1/10 cirrus at about 25,000'. Visibility 400 yards.

ROUTE OUT: Dense fog, top 750', becoming nil 20 miles north of the base with nil low cloud, becoming 7-10/10 stratocumulus, tops 5000', at 2 deg. E, becoming nil at 7 deg. E. Additional swelling cumulus, tops 8-9000', between 4 and 5 deg. E. Nil middle cloud, becoming 5-7/10 altostratus, base 13-14,000', tops 15-16,000', just before reaching the Danish coast. 1-3/10 cirrus at 25-26,000'. Horizontal visibility unrestricted above the haze layer. Vertical visibility 15-20 miles.

TURNING POINT: 55 deg. 54 min. N, 08 deg. 47 min. E. Time of recall: 1343. Nil low cloud. 5-7/10 altostratus, base 13-14,000', tops 15-16,000'. 2-3/10 cirrus at 25-26,000'. Horizontal visibility unrestricted. Vertical visibility 20-30 miles.

ROUTE BACK: Same as route out except over England. 1-2/10 cumulus, base 3-4000', over England. 2-4/10 altocumulus, base 12,000', over England. Cirrus increasing to 4-6/10, base 25-26,000', over England. Vertical visibility 8-10 miles over England.

BASE ON RETURN: 1657. Nil low cloud. 3/10 altocumulus, base 12,000'. 5/10 cirrus, base 25,000'. Visibility 15 miles.

REMARKS: Nil icing or contrails. Temperatures about 1 to 2 degrees warmer than briefed; -2 deg. at 15,000'. Wind at 9000', 53 deg. 59 min. N 05 deg. 39 min. E, 236 deg. at 30 knots. Swelling cumulus observed to south of route over the Northern German coast. Multilayered stratified clouds observed to east of turning point.

*Arthur B. Street*

ARTHUR B. STREET  
Captain, Air Corps  
Staff Weather Officer

# CONFIDENTIAL



# OPERATIONAL ROUTE FORECAST

DATE 27 August 1944

PERIOD 0130 - 130hrs

AG P BR HQ SOS

122929

	A Base to 10 Deg East	B 10 Deg East to Target to 10 Deg East.	C 10 Deg East to Bases	D
1 WEATHER	Clear with Fog (becoming thinner, Sky not Discernable) becoming Cloudy.	Cloudy with Haze at Bases	<b>CONFIDENTIAL</b>	****NOTE*** Ridge of Cumulonimbus Tops to 30,000ft over North Sea.
2 CLOUDS	Nil Low Cloud becoming 5-7/10 Stratus base 2-600ft tops 1000-1500ft in immediate Coastal Area and in Patches over North Sea. Top 5000 ft. Nil Medium Cloud. Nil High Cloud becoming 6-8/10 Layered Cirro-stratus base 18-20,000ft tops 28-30,000ft at 05 Deg East.	Stratus breaking to Nil inland East of 10 Deg E. Cirrostratus becoming Cirrus 2-5/10 base 25,000ft east of 10 Deg East. SIMILAR ON RETURN TO 10 Deg East.	REVERSE OF A-2 with Low Cloud becoming over Base 4-6/10 Small Cumulus base 3-4000ft tops 5-600ft 3-5/10 Fine Cirrus base 25,000ft.	Nil Contrails below 25,000; except Dense Persistent Contrails above 18,000ft between 05 and 10 Deg East  FOR TARGET PRESSURE ALT. ADD TARGET ELEVATION TO (minus) -128ft.  Target Sea Level Press 30.06inches.
3 ICING	12,000ft NIL ICE	14,000ft NIL ICE	12,000ft NIL ICE	
4 VISIBILITY	3-600 yds locally less than <del>300</del> 300yds. Fog top 500-1000ft. Haze Top 8000ft. Unlimited above.	Unlimited Horizontal Vertical Visibility 15-20 Miles.	Unlimited Aloft 4-6 miles at Bases	
HEIGHT	DIRECTION VELOCITY	DIRECTION VELOCITY	DIRECTION VELOCITY	DIRECTION VELOCITY
SURFACE	Base to 10 Deg East 040 05	10 Deg East to Target Light and Variable	Temperatures. Plus 23	
5000 FT	160 10	140 05	Plus 13	
10000 FT	220 15	190 10	Plus 05	
15000 FT	230 15	200 15	-04	
20000 FT	220 20	200 20	-15	
25000 FT	220 25	200 25	-26	
30000 FT	210 35	200 30	<del>23</del> -38	

BASE ALTIMETER SETTING 30.06inches TARGET SURFACE TEMP. Plus 23 TARGET MEAN TEMP. at 26,000ft Plus 02.0  
TEMP. AT 26,000 FT. -28.4 TARGET SURFACE (PRESSURE-ALT) -128

DECLASSIFIED PER NND 745005  
BY PO2 NARA DATE 1/22/11



A/C 42-31891

P	Maxwell, Charles	2nd Lt.	612th
CP	McLeod, Lucien	2nd Lt.	612th
N	Billman, James K.	2nd Lt.	612th
RO	Searcy, Marion E.	S/Sgt	612th
B	O'Brien, Eugene B.	Sgt	612th
TTG	Thomas, Robert L.	S/Sgt	612th
BTG	Lamoureux, Duane A.	Sgt	612th
TG	Welborn, Luther E.	Sgt	612th
LWG	Lopez, Juan	Sgt	612th

A/C 42-102393

P	Frost, James A.	1st Lt.	612th
CP	McMiley, Jack A.	2nd Lt.	612th
N	Gabriel, Fred	2nd Lt.	612th
B	Lignore, James C.	S/Sgt	612th
RO	Axterson, Russell C.	S/Sgt	612th
TTG	Wilson, James L.	S/Sgt	612th
BTG	Hodge, DeWayne E.	S/Sgt	612th
TG	McCabe, Arch (NMI)	S/Sgt	612th
LWG	Jeffiniak, John (NMI)	Sgt	612th

A/C 42-107039

P	Mehler, Morris M.	2nd Lt.	612th
CP	<del>XXXXXXXX, XXXXX</del>	2nd Lt.	612th
N	Gervin, Herbert J.	2nd Lt.	612th
B	Kaczorowski, Henry A.	2nd Lt.	612th
RO	Steiman, Max	S/Sgt	612th
TTG	Littrell, Wallace G.	S/Sgt	612th
BTG	Kerryan, Pete, Jr.	Sgt	612th
TG	Cloutier, Donald A.	Sgt	612th
LWG	Dunne, Patrick A.	Sgt	612th
LWG	Smith, Harold	Sgt	612th

A/C 42-106992

P	Burns, Estel G.	1st Lt.	612th
CP	Toopkins, David G.	2nd Lt.	612th
N	Gray, Arthur (NMI), Jr.	2nd Lt.	612th
B	Winsten, John S.	S/Sgt	612th
RO	Hill, Adam	S/Sgt	612th
TTG	Alingbiel, Eugene F.	S/Sgt	612th
BTG	Swope, Donald M.	S/Sgt	612th
TG	Henry, Hilmer	S/Sgt	612th
LWG	Gruchawka, John (NMI)	S/Sgt	612th

A/C 43-37628

P	Loughlin, David (NMI)	1st Lt.	612th
CP	Herath, Charles F.	2nd Lt.	612th
N	Bernard, Roger L.	2nd Lt.	612th
B	Gedlak, Edwin E.	2nd Lt.	612th
RO	Herrera, James L.	S/Sgt	612th
TTG	Livingston, Oliver E.	S/Sgt	612th
BTG	Jung, John S.	S/Sgt	612th
TG	Sailey, Albert M.	S/Sgt	612th
LWG	Gralle, Arlo H.	S/Sgt	612th
	Reider, Phillip W.	S/Sgt	612th
	Walker, Wallace W.	S/Sgt	612th



612TH BOMBARDMENT SQUADRON (H)

42-102328

5-3

401ST BOMBARDMENT GROUP (H)  
Office of the Operations Officer  
APO 557

27 August 1944

SUBJECT: Loading List

TO: Operations Officer, 401st Bombardment Group (H),  
APO 557, AAF Station 128

A/C 600 PFF

P	Carns, Bernhardt F.	1st Lt.	612th
CP	Maupin, Jere W.	Major	612th
N	Jeffery, Morey B.	1st Lt.	612th
N	Malone, John L.	2nd Lt.	612th
NO	Howard, Robert W.	1st Lt.	612th
B	Wiegler, Martin J.	2nd Lt.	612th
RO	Vescio, Fred J.	(1/sgt)	612th
TTG	Hester, Richard L.	(1/sgt)	612th
TG	<del>XXXXXXXXXXXXXXXXXXXX</del> <del>XXXXXXXXXXXXXXXXXXXX</del> DIGIANNI, JAMES (NMI)	(1/sgt)	612th
LWG	Dusenberry, Charles J.	S/sgt	612th

A/C 42-39993

P	Gibson, Roger C.	1st Lt.	612th
CP	Atkinson, William A.	2nd Lt.	612th
B	<del>XXXXXXXXXXXXXXXXXXXX</del> <del>XXXXXXXXXXXXXXXXXXXX</del> CLARK, EUGENE E.	2nd Lt.	612th
N	Kemler, Arden C.	2nd Lt.	612th
RO	Heikkinen, Carl R.	(1/sgt)	612th
TTG	Williamson, Joseph R.	T/sgt	612th
BTG	Reethler, Roland V.	S/sgt	612th
LWG	King, Francis W., Jr.	S/sgt	612th
LWG	Welch, Harold H.	Sgt	612th
LWG	Phelps, Durwood W.	S/sgt	612th

A/C 42-102328

P	Ludeman, Louis H.	1st Lt.	612th
CP	Holland, Martin C.	2nd Lt.	612th
N	Hodowski, Bernard E.	2nd Lt.	612th
B	Wolchick, Walter	(1/sgt)	612th
RO	Robbins, Gene W.	Sgt	612th
TTG	Smith, Nelson E.	S/sgt	612th
BTG	Meyer, Gerald T.	(1/sgt)	612th
TG	Matanic, George P.	Sgt	612th
LWG	Ferkel, Max (NMI)	Sgt	612th
LWG	Sabcock, David Y.	(1/sgt)	612th

A/C 42-37938

P	Linford, Grant H.	1st Lt.	612th
CP	MacMonagle, George A.	2nd Lt.	612th
N	Schuermann, Urban H.	2nd Lt.	612th
B	Dietrich, Arthur R.	S/sgt	612th
RO	Whitman, William H.	S/sgt	612th
TTG	McNally, Robert G.	S/sgt	612th
BTG	Kimball, Tom E.	S/sgt	612th
TG	Keller, Phillip W., Jr.	S/sgt	612th
LWG	Walke, Wallace W.	T/sgt	612th



3-13

SIX HUNDRED AND FIFTEENTH BOMBARDMENT SQUADRON (H)  
 FOUR HUNDRED AND FIRST BOMBARDMENT GROUP (H)  
 Office of the Operations Officer

27 August 1944.

SUBJECT: Loading list.  
 1. Following is the list of Combat Crews participating in today's mission.

PLANE #	GRADE	NAME	FIRST	(MI)	SQUADRON
---------	-------	------	-------	------	----------

PLANE # 45-30330	1st Lt.	Grimm	William	F.	615th
	2nd Lt.	Huesgin	Herman	K.	"
	2nd Lt.	Wheeler	Willard	(MI)	"
	2nd Lt.	Harris	Raymond	(MI)	"
	Sgt.	Kressler	Oliver	J.	"
	Sgt.	Brown	Thomas	J.	"
	Capt.	Monarchy	Theodore	(MI)	"
	Sgt.	Wheeler	Robert	L.	"
	Capt.	Martin	Eugene	(MI)	"
	Sgt.	Wheeler	George	(MI)	"
PLANE # 42-31091					612th

PLANE # 45-30330	2nd Lt.	Cooper	Louis	B.	615th
	2nd Lt.	Spansel	Kaye	(MI)	"
	2nd Lt.	Wheeler	George	(MI)	"
	2nd Lt.	Benedict	Benedict	(MI)	"
	Sgt.	Wheeler	Wheeler	(MI)	"
	Sgt.	Sexton	Sexton	(MI)	"
	Sgt.	Maroncelli	Harry	(MI)	"
	Sgt.	Lawrence	Ralph	(MI)	"
	Sgt.	Wheeler	Charles	(MI)	"
	Sgt.	Wheeler	Wheeler	(MI)	"
PLANE # 42-10297				A.	612th

PLANE # 45-30330	1st Lt.	Duckworth	Robert	O.	615th
	2nd Lt.	Morrow	Russell	(MI)	"
	2nd Lt.	Huntsman	Warren	(MI)	"
	2nd Lt.	Wheeler	Robert	(MI)	"
	Sgt.	Halderman	Lyle	(MI)	"
	Sgt.	Wheeler	Wheeler	(MI)	"
	Sgt.	Wheeler	Edward	(MI)	"
	Cpl.	Tarr	Clyde	(MI)	"
	Sgt.	Wheeler	Clayton	(MI)	"
	Sgt.	Wheeler	Wheeler	(MI)	"
	Sgt.	Wheeler	Wheeler	(MI)	"

PLANE	GRADE	NAME	FIRST	(MI)	SQUADRON
PLANE # 45-30330					



PLANE # 42-102488

DUTY	RANK	LAST (NAME)	FIRST	(MI)	SQUADRON
P	2nd Lt.	McIlraith	William	H.	615th
CP	2nd Lt.	Connellus	Stanley	R.	"
MSG	2nd Lt.	KING Hughes	Frank	T.	"
EO	S/Sgt.	Webb	Joseph	H.	"
RO	T/Sgt.	Roberts	Melvin	L.	"
TE	T/Sgt.	Anthony	Francis	W.	"
BT	S/Sgt.	Greer	Frank	W.	"
TG	S/Sgt.	Barbican	Anton	J.	"
EO	Sgt. 1st	Berner	Morris	(NMI)	"
CB	Sgt. 1st	HOLLOW	Wesley	"	"
<u>PLANE # 42-38077</u>		<u>PROCTOR</u>	<u>Yopel</u>	<u>O.</u>	<u>615th</u>

PLANE # 42-38077	1st Lt.	Dow	Herbert	V.	615th
CP	2nd Lt.	Woodward	William	B.	"
MSG	2nd Lt.	KING	Robert	J.	"
EO	S/Sgt.	Machasiok	Alfred	(NMI)	"
RO	S/Sgt.	Garr	Gene	(NMI)	"
TE	S/Sgt.	Adams	Leroy	H.	"
EO	S/Sgt.	Machietto	Richard	B.	"
TG	S/Sgt.	Sokolowski	Edward	A.	"
FG	S/Sgt.	Greenberg	Harold	(NMI)	"
CB	Sgt. 1st	Wesley	"	"	"
<u>PLANE # 42-97664</u>		<u>COOPER</u>	<u>TONY</u>	<u>B.</u>	<u>615th</u>

PLANE # 42-38077	2nd Lt.	Sombart	George	W.	615th
CP	2nd Lt.	Shapiro	Leo	(NMI)	"
MSG	P/O	Wiley	Junior	B.	"
BIG	2nd Lt.	Mrosek	Chester	W.	"
ROY	Cpl.	Andrews	Leroy	(NMI)	"
TE	Cpl.	Smith	Elmer	E.	"
BT	Cpl.	Dalley	J.	B.	"
TG	Cpl.	Allen	Lewis	(NMI)	"
FG	P/O	Finklestein	Herbert	(NMI)	"
CB	Sgt. 1st	HOLLOW	"	"	"
<u>PLANE # 42-51435</u>		<u>OLSON</u>	<u>MITCHELL</u>	<u>B.</u>	<u>615th</u>

PROLL	1st Lt.	FARR (NMI)	Clinton	J.	615th
CP	2nd Lt.	Blevins	Charles	H.	"
PLANE # 42-102488	2nd Lt.	Hansen	Gerald	E.	"
B	2nd Lt.	Ridley	John	U.	"
RO	T/Sgt.	Allen	John	L.	"
TT	S/Sgt.	Perez	Louis	A.	"
BT	S/Sgt.	Wernerst	Arthur	(NMI)	"
TG	S/Sgt.	Holland	James	B.	"
FG	S/Sgt.	Daniels	George	C.	"

SA 10/15/45

Office of the Adjutant General  
 6000 ROAD AND MILITARY EQUIPMENT CENTER (H)  
 SIX HUNDRED AND FIFTY MILITARY EQUIPMENT CENTER (H)

2-10



SIX HUNDRED AND FIFTEENTH BOMBARDMENT SQUADRON (H)  
 FOUR HUNDRED AND FIRST BOMBARDMENT GROUP (H)  
 Office of the Operations Officer  
 AAF - Sta - 128 - APO - 557

28 August 1944.  
 21

SUBJECT: Loading list. (Continued)

TO : Operations Officer, 401st Bomb Gp (H), Sta - 128 - APO - 557.

1. Following is the list of Combat Crews Participating in today's mission.

PLANE # 43-38125

DUTY	RANK	LAST (NAME)	FIRST	(MI)	SQUADRON
P	2nd Lt.	Kochel	Michael	J.	615th
CP	F/O	Callahan	Raymond	J.	"
N	2nd Lt.	Howze	Sturat	A.	"
B	2nd Lt.	Hoffman	Lloyd	G.	"
RO	S/Sgt.	Concino	Joseph	A.	"
TT	Sgt.	Beeson	Charles	W.	"
BT	Sgt.	Kelley	Thomas	W.	"
TG	Sgt.	Cobbs	Kenneth	W.	"
FG	Sgt.	Wofford	Dewey	B.	"

PLANE # 44-6146

P	2nd Lt.	Kenze	Bodo	C.	615th
CP	2nd Lt.	Kelp	Norman	J. (10)	"
N	2nd Lt.	Stork	Oliver	L.	"
B	2nd Lt.	Kossuth	Alfred	G.	"
RO	I/Sgt.	Gratz	Robert	I.	"
TT	S/Sgt.	Jones	William	B.	"
BT	S/Sgt.	Quigley	John	R.	"
TG	S/Sgt.	Kolster	Frederick	K.	"
FG	Sgt.	Bradley	Orville	R.	"

PLANE # 43-38159

P	2nd Lt.	Udy	John	(NMI)	615th
CP	2nd Lt.	Hockaday	Billy	S.	"
N	2nd Lt.	Mohahan	Oscar	R.	"
B	2nd Lt.	Youel	Dale	F.	"
RO	S/Sgt.	Knowles	REIA Harry	K.G.	"
TT	S/Sgt.	Young	Jack	R.	"
BT	Sgt.	Albert	Russell	H.	"
TG	Sgt.	Warn	Albert	E.	"
FG	Sgt.	Jencks	Robert	L.	"



SIX HUNDRED AND FOURTEENTH BOMBARDMENT SQUADRON (H)  
 FOUR HUNDRED AND FIRST BOMBARDMENT GROUP (H)  
 Office of the Operations Officer

**S-3**

AAF Station # 128  
 27 August 1944

SUBJECT: Loading List.

TO : Operations Officer, 401st Bomb Gp (H), AAF Station # 128, APO # 587.

1. Following is the list of Combat Personnel participating in today's Mission.

PLANE	<u>42-51662</u>		
P	2nd Lt.	SILVERSTEIN, HARRY P.	614th
CP	2nd Lt.	FARQUEAR, JOHN A.	2
N	2nd Lt.	CRICKENBERGER, LAWRENCE H.	"
CTG	S/Sgt.	Landwehr, Carl W.	"
RO	S/Sgt.	Gravel, Donald A.	"
TT	T/Sgt.	Dotson, Glenn	"
BT	S/Sgt.	Bergstrom, Donald E.	"
TG	Sgt.	Meyers, Francis S. Jr.	"
WG	S/Sgt.	Dias, George V.	"

PLANE	<u>33-38035</u>		
P	1st Lt.	LINCOLN, CLIFFORD A.	"
CP	1st Lt.	MYERS, JOSEPH H. JR.	"
N	1st Lt.	MC CLUNG, GUY L. JR.	"
B	1st Lt.	DANILAVEZ, STEPHEN J.	"
RO	T/Sgt.	Johnson, Oscar M.	"
TT	T/Sgt.	Bredelis, Raymond C.	"
MO	1st Lt.	WINGRAD, ALFRED A.	"
TG	S/Sgt.	Classick, John F. Jr.	"
WG	S/Sgt.	Haley, Daniel J.	"

PLANE	<u>42-107084</u>		
P	2nd Lt.	SISSON, NORMAN L.	"
CP	2nd Lt.	HOEMANN, EUGENE E.	"
N	2nd Lt.	CROSSEN, ALVERN	"
B	F/O	PICKER, NATHAN	"
RO	Sgt.	Haluck, Andrew S.	"
TT	Sgt.	Carter, Peter J.	"
BT	Cpl.	Stevens, Calvin J.	"
TG	Cpl.	Ritchie, Francis T.	"
WG	Sgt.	Torres, Jose M.	"

PLANE	<u>42-97602</u>		
P	1st Lt.	LEWICK, HOWARD P.	"
CP	2nd Lt.	JAEGER, ALBERT J.	"
N	2nd Lt.	NORTON, WILLIAM	"
B	2nd Lt.	HAGERTY, JAMES J.	"
RO	T/Sgt.	Volz, Bernard Jr.	"
TT	T/Sgt.	Findlay, Matthew R.	"
BT	S/Sgt.	James, Harold L. Jr.	"
TG	S/Sgt.	Schwiederek, John J.	"
WG	S/Sgt.	Kosiba, Frank T.	"



Loading List Cont:

PLANE 42-97145

P	2nd Lt.	CROZIER, JOHN C.	614th
CP	1st Lt.	MELTON, LAWATA T.	"
N	2nd Lt.	POLSTER, ERVING	"
B	2nd Lt.	WHITING, ERVING	"
RO	Sgt.	Hapner, Clayton	"
TT	Pvt.	Ligon, James E.	"
BT	Cpl.	Page, Joseph L.	"
TG	Cpl.	Kitts, Keith D.	"
WG	Cpl.	Merrill, Richard E.	"

PLANE 42-97869

P	2nd Lt.	MAYS, HAL G.	"
CP	2nd Lt.	LIVINGSTON, HERMAN	"
N	2nd Lt.	KOSKI, MATTHEW S.	"
B	2nd Lt.	SCHAEFER, ROBERT L.	"
RO	Sgt.	Bayes, Willie J.	"
TT	Sgt.	Gay, Clifford E.	"
BT	Cpl.	Cole, William I.	"
TG	Cpl.	Monacella, Joseph L.	"
WG	Cpl.	Wilson, Billie J.	"

PLANE 42097395

P	1st Lt.	KOONS, PAUL R.	"
CP	2nd Lt.	KAHAN, DANIEL	"
N	2nd Lt.	DOBROWOLSKI, EDWARD L.	"
B	1st Lt.	LE BLANC, JOHN S.	"
RO	T/Sgt.	Mc Minn, Thomas C.	"
TT	T/Sgt.	Shane, Charles	"
BT	S/Sgt.	Edwards, Rodney W.	"
TG	S/Sgt.	Huerta, Octavio	"
WG	S/Sgt.	Eckenrode, Robert T.	"

PLANE 42-39012

P	1st Lt.	FILEMYR, GARRETT A.	"
CP	2nd Lt.	CLAXTON, HERBERT W.	"
N	2nd Lt.	ROBINSON, EDWARD F.	"
GTG	S/Sgt.	Tutwiler, David M.	"
RO	S/Sgt.	Parkes, James S.	"
BT	T/Sgt.	Noll, Robert C.	"
BT	S/Sgt.	Reynolds, William H.	"
TG	S/Sgt.	Culver, Malcolm J.	"
WG	Cpl.	Campbell, Thomas B.	"

PLANE 42-102659

P	1st Lt.	UTTER, CHARLES W.	"
CP	1st Lt.	SCHULZ, JOHN	"
N	2nd Lt.	DAMP, EDWARD	"
B	2nd Lt.	HOPE, JOHN F. JR.	"
RO	Sgt.	Fulton, David W.	"
TT	Sgt.	La Vigne, Robert H.	"
BT	Cpl.	Cole, Harry L.	"
TG	Cpl.	Zaborsky, Stephan A.	"
WG	Sgt.	St Peter, Donald A.	"

For the Squadron Commander:

RICHARD H. KAUFMAN,  
 Capt., Air Corps,  
 Asst Oms Officer.



S-3

613 BOMBARDMENT SQUADRON (H)  
 OFFICE OF THE OPERATIONS OFFICER  
 AAF STATION 128, WFO # 557

27 August 1944

LOADING LIST

PLANE NO	DUTY	RANK	LAST NAME	FIRST NAME	MI
42-97780	P	1st LT.	MANNIX	WILLIAM	C.
	CP	1st LT.	FOWLER	RUSSELL	M.
	N	1st LT.	MALONEY	WILLIAM	F.
	B	F/O	ROSTROM	CARL	L.
	RO	T SGT.	THOMPSON	JOHN	S.
	TT	T SGT.	STOKESBERRY	THOMAS	R.
	BT	S SGT.	SCOTT	EDWARD	R.
	TG	S SGT.	EGGLESTON	HENRY	H.
	WG	S SGT.	PAVLISIN	JOSEPH	K.
42-102947	P	1st LT.	JETTER	ARTHUR	C.
	CP	2nd LT.	CAIN	ROBERT	W.
	N	2nd LT.	HURSH	HARRY	(NMI)
	B	S SGT.	PETERS	WILLIAM	J.
	RO	T SGT.	SHEWMAN	LEO	(NMI)
	TT	T SGT.	NELSON	RICHARD	D.
	BT	S SGT.	KNAPP	MANTIN	F.
	TG	S SGT.	BAIER	JOHN	J.
	WG	S SGT.	ROBERSON	ROBERT	E.
43-37632	P	2nd LT.	BUDD	CLAYTON	R.
	CP	2nd LT.	MC LEOD	REGINALD	L.
	N	2nd LT.	KLOTZ	BERNARD	L.
	B	S SGT.	KISSACK	JOHN	D.
	RO	S SGT.	SKALA	FRANKLIN	C.
	TT	S SGT.	OLIVER	ERNEST	S.
	BT	SGT.	DESTROISMAISON	ARTHUR	(NMI)
	TG	SGT.	ROSEN	HARLAN	(NMI)
	WG	SGT.	MURRAY	DALE	S.
44-6104	P	1st LT.	KEELING	CHARLES	W.
	CP	1st LT.	FRAZIER	DONALD	F.
	N	1st LT.	WOLIVER	IRVING	(NMI)
	B	2nd LT.	JARDINE	JOHN	H.
	RO	T SGT.	CHARNES	HUGH	W.
	TT	T SGT.	PRIEST	MAURICE	C.
	BT	S SGT.	PEREZ	FRANK	W.
	TG	S SGT.	PICO	WILLIAM	E.J.
	WG	S SGT.	GUESS	WILLIAM	J.



PLANE NO	DUTY	RANK	LAST NAME	FIRST NAME	MI
43-37790	P	1st LT.	LIPPERT	JACK	R.
	CP	2nd LT.	YOUNG	THOMAS	Y.
	N	2nd LT.	GUTTMANN	HENRY	W.
	B	S SGT.	BLEKNAP	LEE	O.
	RO	T SGT.	MAYER	JACK	P.
	TT	T SGT.	PETIT	GEORGE	L
	BT	S SGT.	SELESKY	ISADORE	(NMI)
	WG	S SGT.	LA GRASTA	JOSEPH	H.
			ELLIS	LAMAR	A.
43-6310	P	1st LT.	HANSON	ALBERT	L.
	CP	2nd LT.	CRAYTOR	FREDERICK	A.
	N	1st LT.	WATSON	HENRY	T.
	B	S SGT.	GREEN	BERNARD	K.
	RO	T SGT.	SEARS	DONALD	L.
	TT	T SGT.	MURRAY	HOMER	G.
	BT	S SGT.	KOONS	DONALD	L.
	WG	S SGT.	MARTZ	DALE	C.
			LYALL	LESTER	D.
43-38160	P	2nd LT.	NELSON	AUGUSTUS	J.
	CP	2nd LT.	NEVOIS	EDGAR	W.
	N	2nd LT.	KULCZYCKI	JOHN	S.
	B	2nd LT.	WILCOX	BLAINE	B.
	RO	SGT.	DORRIS	JOHN	T.
	TT	SGT.	WILLIAMS	LAWRENCE	E.
	BT	SGT.	MAJESKI	FRANK	B.
	WG	SGT.	ANDERSON	BORRIS	D.
76.	SGT.	MC CARTHY	JAMES	V.	
43-38267	P	1st LT.	LOCKHART	RUSSELL	R.
	CP	2nd LT.	HAM	FORTER	R.
	N	1st LT.	GRILLEN	ROBERT	L.
	B	1st LT.	LEWIS	GEORGE	R.
	RO	T SGT.	SCHLAGEL	OTTO	M.
	TT	T SGT.	PYLES	CHARLES	E.
	BT	S SGT.	NULL	LLOYD	J.
	WG	S SGT.	MILLION	LAWRENCE	C.
			MAC GOWAN	BATES	R.



PLANE NO	DUTY	RANK	LAST NAME	FIRST NAME	MI
44-6113	P	1st LT.	THOMASON	WALTER	H.
	CP	F/O	DOBRWATZ	HERMAN	(NMI)
	N	2nd LT.	WRIGHT	RICHARD	B.
	B	T SGT.	MC GRANE	CLIFTON	W.
	RO	T SGT.	RAPEZ	ISAAC	C.
	TT	T SGT.	LYMBURN	WALLACE	R.
	BT	S SGT.	GUMBELT	HERBERT	L.
	TG	S SGT.	GODFRAY	HAROLD	T.
	WG	S SGT.	MISZKO	HENRY	M.
43937736	P	1st LT.	LEMMONS	CLEATUS	C.
	CP	1st LT.	COTTRILL	RONALD	M.
	N	1st LT.	KOMAROFF	STUART	J.
	B	1st LT.	HEISER	CARL	H.
	RO	T SGT.	MIZNER	HARRY	R.
	TT	T SGT.	TAYLOR	ROBERT	C.
	BR	S SGT.	FELYNICH	DANIEL	(NMI)
	TG	S SGT.	WEBSTER	WILLIAM	E.
	WG	T SGT.	GREEN	CECIL	B.