

~~S~~ ~~E~~ ~~C~~ ~~A~~ ~~T~~ ~~I~~ ~~O~~ ~~N~~ ~~C~~ ~~H~~ ~~A~~ ~~N~~ ~~G~~ ~~E~~ ~~D~~
RESTRICTED by auth of
CG AAF Sta 128 by

JACKSON M. PHIPPS,
Captain, Air Corps,
Adjutant.

REPORT OF OPERATIONAL DAY

MISSION NO. 145
19TH. SEPTEMBER, 1944

94TH. COMBAT BOMB WING
401ST. BOMBARDMENT GROUP (H)

MISSION NO. 145

To: HAMM , GERMANY

401ST BOMBARDMENT GROUP (H)

R E P O R T O F O P E R A T I O N A LD A YMISSION SUMMARY REPORTMISSION # 145Date 19 September 1944ASSIGNMENT

1. Assigned Target: SOEST, GERMANY
2. Commitments: The 401st was to furnish the complete 36 A/C 94th "C" CBW. Two PFF A/C were included in the lead box and one PFF A/C in the high box. A spare was to accompany each formation.

EXECUTION

1. Targets Bombed:
 - Lead Box: WESEL, GERMANY
 - Low Box: Unknown Target of Opportunity
 - High Box: HAMM, GERMANY
2. a. Wing Leader: Lt. Col. E. W. BROWN
 - Lead Navigator: 1st Lt. H. E. KRON (Fine - "Mickey")
 - Lead Bombardier: Capt. H. W. MEADVILLE
- b. Low Box Leader: 1st Lt. T. D. GARROLL
 - Lead Navigator: 1st Lt. P. F. KAISER
 - Lead Bombardier: Major J. PICKOFF
- c. High Box Leader: Capt. R. D. MC CORD
 - Lead Navigator: 1st Lt. H. D. FISHBECK
 - Lead Bombardier: 1st Lt. J. E. BROWNE
3. Flight Over Target:
 - a. Takeoff: Take off was under-near instrument conditions. There was a solid layer of clouds from the ground to 9000'. All ships took off satisfactorily.
 - b. Group and Wing Assemblies: Assembly was good, made at 15000' which was briefed altitude plus five thousand feet. Due to the change in altitude assembly was not accomplished on time.
 - c. Route Over England: We departed directly for point Z and made Division assembly on time and departed in good wing and division assembly.

MISSION SUMMARY REPORT (Cont)

b. Bombing Run: (Cont)

High Box: We passed the primary target, because we could hardly see our wing ships - much less the target. We lost the lead and low groups. The "Mickey" Operator picked up the secondary target we made a run. We dropped PFF on the secondary target.

c. Flight From Target: By individual groups, but pretty much as briefed for each box. As wing assembly was not attempted due to lack of gasoline and good fighter support. However, each box more or less followed the briefed course home.

d. Return to Base: A diversion was received while over France sending the 401st to North Pickenham: Twenty-four A/C landed there, and others at scattered fields.

e. Weather: Over England 10/10ths bases 0, tops 9-10,000, 2/10-5/10ths middle 12000-13000', no high. Over continent 7-9/10ths low strata cumulus. 3/10-5/10ths high and middles in layers.

f. Fighter Support: Good.

g. Conclusions and Recommendations: Buckeye Red must be able to make the proper decisions as regards weather and its effect on bomber formations.

5. Aircraft Not Attacking:

All aircraft scheduled attacked a target.

6. Enemy Opposition:

No air opposition. (See Flak Report for Flak)

7. Battle Damage:

| <u>Major</u> | <u>Minor</u> | <u>Flak</u> |
|--------------|--------------|-------------|
| 0 | 4 | 4 |

8. Casualties:

None.

9. Statistical Summary of Operations: (See attached form)

10. Bombing Data:

a. Observations:

Lead Box: Bomb results on the target of opportunity were fair.

Low Box: Results were unobserved.

High Box: Results were unobserved.

MISSION SUMMARY REPORT (Concl'd)

Bombing Data:(Cont)

b. Disposition of Bombs:

Lead Box: Of the 12 A/C entering enemy territory, nine bombed on the selected target of opportunity, Wesel, Germany. They dropped 106 x 500# GP on Wesel. 3 A/C (#159, 485, & 146) had difficulty staying in formation and finally selected the last resort target (Dulmen) and dropped 36 x 500# GP.

Low Box: Thirteen A/C entered enemy territory. A/C 602 tacked on the 379th Gp and bombed the secondary target, Hamm, with them - dropping 12 x 500# GP. The other twelve aircraft selected an unknown target of opportunity NW of Hamm and dropped 144 x 500#GP.

High Box: Twelve A/C entered enemy territory and bombed the secondary target, Hamm. They dropped 143 x 500# GP.

c. Tabular Summary of Disposition of Bombs:

| | Aircraft | | Bombs | | | |
|----------------------------------|-------------|---------|--------|------|------|------------------|
| | Over Target | Bombing | Number | Size | Type | Fusing Nose Tail |
| Wesel, Germany | 9 | 9 | 106 | 500# | M64 | 1/10 1/40 |
| Hamm, Germany | 13 | 13 | 155 | 500# | M64 | 1/10 1/40 |
| Unknown T. of O. | 12 | 12 | 144 | 500# | M64 | 1/10 1/40 |
| Other | 3 | 3 | 36 | 500# | M64 | 1/10 1/40 |
| Total Bombs on Target | | | 441 | 500# | M64 | 1/10 1/40 |
| Other Expenditures | | | - | - | - | - |
| Bombs Returned | | | 24 | 500# | M64 | 1/10 1/40 |
| Total (Loaded on A/C Taking Off) | | | 465 | 500# | M64 | 1/10 1/40 |

11. Lost Aircraft: None.

Submitted by:

KEN W. DAUBLE
 Captain, Air Corps
 Statistical Officer

DULMEN

HI SQUADRON
LEAD BOX

LEAD PILOT - LT. OAS
LEAD NAV. - LT. GREEN
LEAD BOMB. - LT. MENCOW

PATTERN - 2088 X 1440 ft. (150' Int. Setting)



THREE A/C DROPPED WITHOUT BOMB
SIGHT. ONE DROPPED LATE AND BOMBS
DO NOT APPEAR ON PHOTOS.

SAV-401A1629-6 X19-9-44X4 - 8159 -7- 21000X(WESL)
CONFIDENTIAL

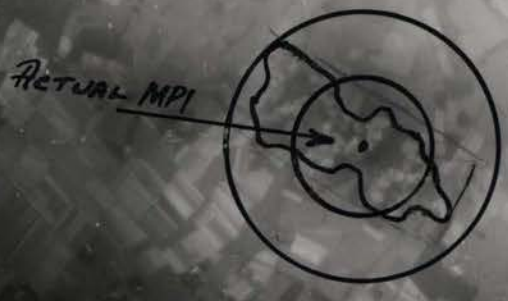
EASTMAN REGULAR SAFETY

ONE A/C
DROPPED LATE. →

LOW BOX

LEAD PILOT - LT. CARROLL
LEAD NAV. - LT. KAISER
LEAD BOMB. - MAJ. PICKOFF

R/F 1:34300
PATTERN - 3430 X 1338 ft.
100% WITHIN 2000'
60% WITHIN 1000'



SAV-401B1628-5 X19-9-44X4 - 7113 -7- 20000X(S152-0654)
CONFIDENTIAL

EASTMAN REGULAR SAFETY

EASTMAN REGULAR SAFETY

WESEL

"LEAD BOX"

AIR CDR - LT. COL. BROWN
LEAD PILOT - LT. COLEMAN
LEAD NAV. - LT. KRON
LEAD BOMB. - CAPT. MEADVILLE

R/F = 1:11500
PATTERN - 1150 X 955 ft.
100% WITHIN 2000'
85% WITHIN 1000'

(NOTE: Small No. of BURSTS
SHORT OF PATTERN APPEAR
IN SUCCEEDING PHOTO)

ACTUAL MPI



14-001A/631 - 9 119-9-4414 - 8033-24 - 21000K WESEL)

STATISTICAL SUMMARY OF OPERATIONS

401st Group1st BD P. O. 499Date of 19 Sept 1944

| | LEAD | | LOW | | HIGH |
|------------------------------------|---------------------------------|--------------------|---------------------|-------------------|--------------------|
| | | PPF - GH | | PPF - GH | |
| 1. No. of A/C Failing to Take Off | - | - | - | - | - |
| 2. No. of A/C Airborne | 11 | 2 | 12 | 1 | 13 |
| 3. No. of A/C Airborne Less Spares | 10 | 2 | 11 | 1 | 13 |
| 4. No. of A/C Sorties | 10 | 12 | 11 | 1 | 13 |
| 5. No. of A/C Attacking | 10 | 12 | 11 | 1 | 13 |
| 6. No. of A/C Not Attacking | - | - | - | - | - |
| (a) Early Returns Included | | | | | |
| 7. Name of Primary Target | SOEST, GERMANY | | | | |
| (a) No of A/C Attacking | - | - | - | - | - |
| (b) No., Size & type of bombs | | | | | |
| 8. Name of Secondary Target | HAMM, GERMANY | | | | |
| (a) No of A/C Attacking | | | 11 | 1 | 1 |
| (b) No., Size & type of Bombs | | | 132 500# M 64 | 11 500# M64 | 12 500# M64 |
| 9. Name of Last Resort Target | DULMEN, GERMANY | | | | |
| (a) No. of A/C Attacking | 3 | | | | |
| (b) No., Size & type of Bombs | 36 500# M64 | | | | |
| 10. Name of Target of Opportunity | WESEL, GERMANY | | | | |
| (a) No. of A/C Attacking | 8 | 2 | | | |
| (b) No., Size, & type of Bombs | 84 500# M64 | 22 500 # M64 | | | |
| 11. Name of Target Opportunity | Unknown T. Of O. (5152 - 0812E) | | | | |
| (a) No. of A/C Attacking | | | | | 12 |
| (b) No., Size & type of Bomb | | | | | 144 500# M64 |
| 12. No of A/C Lost - TOTAL | - | - | - | - | - |
| 13. - to Flak | | | | | |
| 14. - to Flak & E/A | | | | | |
| 15. - to Enemy A/C | | | | | |
| 16. - to Accident | | | | | |
| 17. - to Unknown | | | | | |

STAT SUMMARY (Cont'd)

| | LEAD | HIGH | LOW |
|------------------------------------|--------------------|----------------|----------------|
| 18. Time of Takeoff | 0927 | 0956 | 0929 |
| 19. Time of Attack | 1418 $\frac{1}{2}$ | 1357 | 1406 |
| 20. Average Time of Flight | 6.8 | 6.3 | 6.5 |
| 21. Altitude of Release | 21,100 | 26,538 | 24,400 |
| 22. Visual or PFF | VIS | PFF | VIS |
| 23. Enemy Resistance - AA Int.&ACC | Mod - Inacc | Meager - Inacc | Meager - Inacc |
| 24. - Fighters | - | - | - |
| 25. - Bombers | - | - | - |
| 26. U.S. A/C Engaged by Enemy A/C | - | - | - |
| 27. Degree of Success | FAIR | UNOBS. | UNOBS. |

PFF A/C Borrowed from Groups as follows: NONE

PFF A/C Loaned to Groups as Follows: NONE

NOTES: A/C 602 of the low box flew and bombed with 379th Gp on Hamm, Germany.

Combat Flight Leader

COL. BROWN

Date 19 September 1944

Deputy Flight Leader

Lt LOCKHART

401st Lead Box "C" Wg.
at T/O and Cruise.

4 Over Target

613th
SQDN

COLEMAN (BROWN)

- 612 SC JABWOCK
- 613 IN MACRO
- 614 IW GOLFCLUB
- 615 IY BUZZARD

8033

ANNIS

LOCKHART

6113

7947

613th
SQDN

JETTER

615th
SQDN

OAS

6132

8159

KEELING

CARSON

COOPER

MC KAY

8267

1591

6146

1485

BUDD

6313

DOUGLAS

KECK

8187

2947

SPARES

CAMPBELL

7931

(Returned)

*BOMBED
DULMEN, GERMANY*

Combat Flight Leader LT CARROLL Date 19 Sept 1944
Deputy Flight Leader LT BROWN

LOW BOX 401st Gp "C" Wg.
At T/O AND CRUISE.

Over Target

614th SQDN

- 612 SC JABWOCK
- 613 IN MACRO
- 614 IW GOLFCLUB
- 615 IY BUZZARD

CARROLL

7780

SILVERSTEIN

BROWN

7151

1863

614th SQDN

LERWICK

615th SQDN

SULLIVAN

6145

7113

HUBBELL

HAYES

DAVES

TURK

7478

8236

7551

7664

KOVACH

2659

MAYS

SISSON

7602

7084

SPARES

JAMES

8330

MORTON (TO COAST ONLY)

2012

*BOMBED WITH
3794 GP*

Combat Flight Leader * **CAPT MC CORD** Date **19 Sept 1944**

Deputy Flight Leader **LT AIKEN**

401st Hi Box "C" Wg.
AT T/O AND CRUISE.

Over Target

612th
SQDN

- 612 SC JABWOCK
- 613 IN MACRO
- 614 IW GOLFCLUB
- 615 IY BUZZARD

MC CORD

8153

MAXWELL

AIKEN

6992

2398

612th
SQDN

615th
SQDN

HOCKING

KOCHER

7632

2674

GIBSON

HARLAN

UDY

STEGEMAN

9995

7039

1077

8125

BONNEY

7790

LAWRENCE

JONES

7938

7628

SPARES

CROMER

1087

(Returned)

- 612 SC JABWOCK
- 613 IN MACRO
- 614 IW GOLFCLUB
- 615 IY BUZZARD

HEADQUARTERS AAF STATION #128
OFFICE OF THE NAVIGATION OFFICER

LEAD BOX

19 September 1944

SUBJECT: Lead Navigator's Narrative

TO : Commanding Officer, 401st Bombardment Group (H)

1. Flight plan, Log, and Track Chart Attached.

2. Narrative:

a. T/O at 0927 hours; Land at 1616 hours.b. Group formed at 1052 hours at 15200 feet.c. Formed CBW at 1052 hours at 15200 feet.d. Began climb at 1228 hours; reached alt. at 1304 hours.

e. Weather encountered over England:

(1) Clouds 10/10th - Visibility 3 miles.(2) Wind at altitude 185 degrees, 23 Knots. @ 20,000f. Means of navigation over England. Gee, Mickey, D.R.g. Means of checking Metro Winds Mickeyh. Joined task force at 1131 $\frac{1}{2}$ hrs. at Lowestoft
(Splasher, City, Coord.)i. English Coast out at 1131 $\frac{1}{2}$ hrs.; Enemy Coast in at 1208 hrs.

j. Fighter Rendezvous:

(1) Going in 1228 hrs.

(2) Coming back _____ hrs.

k. Wind used for bombing:

(1) 160 degrees, 24 Knots.(2) Determined by Mickey
(Method)

l. Bomb run and Method of Target Identifications:

(1) Reached IP at 1336 hrs.(2) Mag. heading over target 166 degrees.(3) Altitude over target 21000 feet.(4) Bombs away at 1418 $\frac{1}{2}$ hrs.(5) Method of target identification and weather over target:
FFF. Dense haze

m. Gee:

(1) Coordinates of furthest fix 50-44 N 04-39 E(2) Obtained at 1236 hours.

n. Difficulties encountered with special equipment.

Unable to identify primary. Bombed
 COMMENTS: Wesel. Low Box bombed unknown Tgt. of
 opportunity. Bombs Away 1406, M.H. 235.
 High box bombed Hamm at 1357, M.H. 276.

/S/ H. E. Kron

H. E. KRON

1st Lt., A. C.

SIGNATURE Lead Nav., Lead Box

HEADQUARTERS AAF STATION #128
OFFICE OF THE NAVIGATION OFFICER

LOW BOX

19 September 1944

SUBJECT: Lead Navigator's Narrative

TO : Commanding Officer, 401st Bombardment Group (H)

1. Flight plan, Log, and Track Chart Attached.

2. Narrative:

- a. T/O at 0929 hours; Land at 1627 hours.
- b. Group formed at 1049 hours at 14000 feet.
- c. Formed CBW at 1133 hours at 14000 feet.
- d. Began climb at 1134 hours; reached alt. at 1316 hours.
- e. Weather encountered over England:
 - (1) Clouds 10 / 10th - Visibility 3-5 miles.
 - (2) Wind at altitude 136 degrees, 24 Knots. @ 14,000
- f. Means of navigation over England, Gee, D.R., Radio.
- g. Means of checking Metro Winds Gee.
- h. Joined task force at 1133 hrs. at Lowestoft
(Splasher, City, Coord.)
- i. English Coast out at 1133 hrs.; Enemy Coast in at 1208 hrs.
- j. Fighter Rendezvous:
 - (1) Going in 1208 hrs.
 - (2) Coming back -- hrs.
- k. Wind used for bombing:
 - (1) 149 degrees, 12 Knots.
 - (2) Determined by Gee
(Method)
- l. Bomb run and Method of Target Identifications:
 - (1) Reached IP at 1332 hrs.
 - (2) Mag. heading over target 241 degrees.
 - (3) Altitude over target 24700 feet.
 - (4) Bombs away at 1406 hrs.
 - (5) Method of target identification and weather over target:
10/10ths. Could not identify primary.
- m. Gee:
 - (1) Coordinates of furthest fix 50-32 N. 05-30 E.
 - (2) Obtained at 1248 hours.
- n. Difficulties encountered with special equipment.

COMMENTS: Bombed unknown target of opportunity.

/S/ P. F. Kaiser
P. F. KAISER
1st Lt., A. C.
Lead Navigator, Low Box
SIGNATURE

HEADQUARTERS AAF STATION #128
OFFICE OF THE NAVIGATION OFFICER

19 September 1944

SUBJECT: Lead Navigator's Narrative

TO : Commanding Officer, 401st Bombardment Group (H)

1. Flight plan, Log, and Track Chart Attached.

2. Narrative:

a. T/O at 0956 hours; Land at 1610 hours.

b. Group formed at 1050 hours at 16,000 feet.

c. Formed CBW at 1050 hours at 16,000 feet.

d. Began climb at 1143 hours; reached alt. at 1250 hours.

e. Weather encountered over England:

(1) Clouds 10/10th - Visability _____ miles.

(2) Wind at altitude 170 degrees, 35 Knots.

f. Means of navigation over England, Gee, D.R.

g. Means of checking Metro Winds Gee, Airplot, D.R.

h. Joined task force at 1132 hrs. at Lowestoft (ahead of us)
(Splasher, City, Coord.)

i. English Coast out at 1132 hrs.; Enemy Coast in at 1208 hrs.

j. Fighter Rendezvous:

(1) Going in 1228 hrs.

(2) Coming back None hrs.

k. Wind used for bombing:

(1) 225 degrees, 20 Knots.

(2) Determined by Bombsight and pilotage
(Method)

l. Bomb run and Method of Target Identifications:

(1) Reached IP at 1331 hrs.

(2) Mag. heading over target 276 degrees, (Hamm)

(3) Altitude over target 25,600 Feet.

(4) Bombs away at 1357 hrs.

(5) Method of target identification and weather over target:

PFF - H2X

m. Gee:

(1) Coordinates of furthest fix 50-38 N. 05-08 E.

(2) Obtained at 1244 hours.

n. Difficulties encountered with special equipment.

COMMENTS:

/S/ Howard Fishbeck
HOWARD FISHBECK
1st Lt., A. C.
Lead Navigator, High Box
SIGNATURE

Lt. Col. Brown

FLIGHT PLAN 24th CG 284

HYAICV108

PILOT Lt. Coleman

NAVIGATOR Lt. H. E. Eron

DATE 19 September 1944

| | | | | | | | |
|-------------|-----------------|---------|------|------|------|------|------|
| STATIONS | 0805 | ENGINES | 0905 | TAXI | 0920 | T.O. | 0935 |
| LEAVE BASE | COTTESMORE 1048 | | | | | | |
| COAST OUT | 1134 | | | | | | |
| ENEMY COAST | 1208 | | | | | | |
| I.P. | 1345 | | | | | | |
| TARGET | 1352 | | | | | | |
| ENEMY COAST | 1502 | | | | | | |
| ENEMY COAST | 1522 | | | | | | |
| E. I. A. | 1548 | | | | | | |

| SUN | | MOON | | TWILIGHT | |
|-------|------|-------|------|----------|----|
| Rises | Sets | Rises | Sets | AM | PM |
| | | | | | |

Zero Hr. - 1130
 Ref alt. - 24000
 Bomb alt - 25000
 Oxygen - 04:15
 Over Continent - 02:54
 Division assembly Lowestoft to 51-15 02-54
 Enemy territory - 01:30

WATCH Fast
 Letdown on Slow
 Cottessmore At G.M.T.
 (Y) buncher Normal 010 Mag.

| FROM TO | W/V | HEIGHT | I.A.S. MPH /K | T. A.S. (K) | COURSE | DRIFT | TRUE HDNG. | VAR. | MAG. HDNG. | G. S. | DIST. | TIME | E.T.A. | CELESTIAL DATA |
|------------------------------------|-------|--------|---------------|-------------|--------|-------|------------|------|------------|-------|-------|------|---------|---------------------|
| Assembly 10000 Cott (Y) buncher | UESD | | | | | | | | | | | | | TIME BODY ALT. AZI. |
| 52-44N 00-39E | (C) | 110/20 | 10000 | 150 | 153 | 076 | A | 80 | A10 | 90 | 136 | 11 | 105 | 1048 |
| Source | | | | | | | | | | | | | | 1053 |
| 52-46N 00-22E | (A) | 109/20 | 11000 | 150 | 154 | 127 | -2 | 125 | A10 | 135 | 134 | 22 | 110 | 1102 |
| March | | | | | | | | | | | | | | |
| 52-33N 00-08E | (U) | 107/22 | 12000 | 150 | 157 | 059 | A | 65 | A10 | 75 | 142 | 32 | 114 | 1116 |
| Takenen | | | | | | | | | | | | | | |
| 52-50N 00-51E | (P) I | 105/23 | 13000 | 150 | 160 | 122 | -2 | 120 | A10 | 130 | 138 | 39 | 117 | 1134 |
| Lowestoft | | | | | | | | | | | | | | English Coast |
| 52-25N 01-45E | | 101/26 | 16500 | 150 | 172 | 149 | A | 155 | A9 | 164 | 152 | 66 | 122, 34 | 1208 |
| 51-15N 02-56E | | -18 | 20000 | 150 | | | | | | | | | | Coast |
| " | | 100/30 | 20000 | 150 | 181 | 112 | -2 | 110 | A8 | 118 | 152 | 73 | 129 | 1237 |
| 50-47N 01-43E | | -18 | Begin climb | | | | | | | | | | | |
| 50-20N 06-22E | | 150/10 | 22500 | 150 | 188 | 112 | A2 | 114 | A7 | 121 | 180 | 72 | 124 | 1301 |
| " | | | 29000 | | | | | | | | | | | |
| 50-13N 07-45E | | 150/10 | 29000 | 150 | 197 | 98 | A2 | 160 | A6 | 106 | 190 | 58 | 116 | 1318 |
| " | | | | | | | | | | | | | | |
| 51-12N 08-19E | | | 29000 | 150 | " | 20 | A2 | 022 | A8 | 028 | 203 | 63 | 119 | 1337 |
| I.P. | | | | | | | | | | | | | | I.P. |
| 51-25N 08-07E | | | 29000 | 150 | " | 342 | A1 | 342 | A6 | 348 | 207 | 24 | 107 | 1344 |
| Target | | | | | | | | | | | | | | Target |
| 51-47N 07-56E | | | 23000 | 170 | 220 | 330 | 0 | 330 | A6 | 336 | 230 | 14 | 104 | 1348 |
| " | | | 22000 | 170 | | | | | | | | | | |
| 51-47N 07-25E | | | 22000 | 170 | 214 | 270 | -2 | 268 | A6 | 274 | 219 | 17 | 105 | 1354 |
| " | | | | | | | | | | | | | | |
| 51-55N 07-00E | | | 22000 | 150 | 186 | 295 | -2 | 293 | A6 | 299 | 194 | 19 | 106 | 1400 |
| " | | | 22000 | 150 | " | 229 | -3 | 226 | A7 | 233 | 184 | 99 | 132 | 1433 |
| 50-30N 05-00E | | | 22000 | 150 | " | 280 | A1 | 282 | A8 | 289 | 218 | 90 | 125 | 1458 |
| 51-07N 02-40E | | 96/32 | 22000 | 150 | " | 280 | A1 | 282 | A8 | 289 | 218 | 90 | 125 | 1458 |
| " | | | | | | | | | | | | | | Coast |
| Clacton | | 100/27 | 17000 | 170 | 195 | 305 | A4 | 309 | A9 | 318 | 209 | 70 | 120 | 1518 |
| " | | | 12000 | | | | | | | | | | | English Coast |
| 51-47N 01-10E | | 110/17 | 7000 | 170 | 163 | 303 | A1 | 304 | A10 | 314 | 179 | 78 | 127 | 1545 |
| Low | | | 2000 | | | | | | | | | | | ETA |
| Cottessmore | | 100/23 | 10000 | 150 | 168 | 124 | -3 | 121 | A10 | 131 | 144 | 100 | 142 | 1103 |
| 51-15N 02-56E | | 100/30 | 20000 | 150 | 181 | 124 | -4 | 120 | A9 | 129 | 153 | 60 | 124 | 1209 |
| Cottessmore | | 107/21 | 10000 | 150 | 158 | 099 | A1 | 100 | A10 | 110 | 137 | 23 | 110 | 1055 |
| Lowestoft | | 104/23 | 13000 | 150 | 181 | 099 | A1 | 100 | A10 | 110 | 137 | 68 | 129 | 1134 |
| Low | | | 0 to 13000 | 150 | 145 | 91 | A2 | 093 | A10 | 103 | 129 | 86 | 133 | 1054 |
| Lowestoft | | | | | | | | | | | | | | ETA |

FLIGHT RECORD

| TIME | COURSE | W/V USED &/OR D.R. DRIF | TRUE HDNG. | MAG. HDNG. | NAVIGATIONAL OBSERVATION | GENERAL OBSERVATION | I.A.S. MPH /K | HEIGHT & AIR TEMP. | T. A.S. | RUN | | G. S. | TO RUN | | E.T.A. |
|------|--------|-------------------------|------------|------------|--|-----------------------------|---------------|--------------------|---------|-------|------|-------|--------|------|----------------------------|
| | | | | | | | | | | DIST. | TIME | | DIST. | TIME | |
| | | | | | VHF - Code for authentication - "Eastern Reserve" Abandon mission - "Red hot poker" | | | | | | | | | | |
| | | | | | Chaff - Discharge 2 minutes before IP, continue for 12 min. Emergency Airframe - Bridwell 51-41N 00-54E Spares - Turn back at Belgian coast Interval - 2 min. between CBUs. Extra flak - 4 guns, 51-25N 08-08E Via or PFF Secondary - 51-40N 07-18E (Hawa) Warholing yard Last report 51-49N 07-18E H.A. interception. | | | | | | | | | | |
| 0902 | | | | | Engines | | | | | | | | | | |
| 0927 | | | | | Take Off | On Cottessmore buncher G.E. | | | | | | | | | |
| 1052 | | | 112 | | G. 52-46N 00-49E | Departing Y. | | 15200 | | | | | | | See gives erroneous fixes. |
| 1100 | | | 105 | | Wickrey, 52-43N 00-18E | | | 15200 | | | | | | | |
| 1110 | | | 118 | | 5 miles south of King's Lynn | | | 15100 | | | | | | | |
| 1117 | | | 119 | | H., 52-36E 00-43E | | | 15100 | | | | | | | |
| 1121 | | | 104 | | 52-35N 01-03E | | | 15300 | | | | | | | |
| 1128 | | | 110 | | 52-31N 01-31E | | | 15100 | | | | | | | |
| 1131 | | | 158 | | 52-33N 01-44E | Coast cut | | 15100 | | | | | | | |
| 1138 | | | 182 | | 52-20N 01-57E | | | 15200 | | | | | | | |

FLIGHT RECORD

| TIME | COURSE | W/V USED &/OR D.R. DRIF. | TRUE HDNC. | MAC. HDNC. | NAVIGATIONAL OBSERVATION | GENERAL OBSERVATION | IAS. MPH. /K | HEIGHT & AIR TEMP. | T.A.S. | RUN | | C. S. | TO RUN | | E.T.A. |
|------|--------|--------------------------|------------|------------|---|--|--------------|--------------------|--------------|-------|--------|------------|---|------|--------|
| | | | | | | | | | | DIST. | TIME | | DIST. | TIME | |
| 1153 | | | 153 | | 51-47N 02-33E | | | 18400 | | | | | | | |
| 1302 | 152 | A | 156 | | 51-27N 02-43E | | | 20000 -140 | (87%) 175 | 61 | 23 1/2 | 156' | | | |
| 1208 | | 185/23K | 123 | | 51-15N 02-56E | Coast in on time wind 185/23 | | 20000 | | | | | | | |
| 1217 | | | 133 | | 51-03N 03-24E | | | 20000 -13 | | | | | | | |
| 1225 | 119 | A | 129 | | 50-53N 03-53E | | | | 183 | 22 | 8 | 165 | | | |
| 1236 | | | 122 | | 50-44N 04-39E | | 152 | 22400 -20 | | | | clearing | | | |
| 1251 | 115 | A 165/24K | 120 | | 50-28N 05-43E | Wind 160/24K | | 25000 -22 | 194 | 44 | 15 | 176 | | | |
| 1315 | | | 32 | | 50-10N 07-40E | Crossed Rhine | 150 | 25000 | | | | | | | |
| 1328 | | | 22 | | | Siegen, 3 miles east of town | | 25000 | | | | | | | |
| 1336 | | | 05 | | I.P. | Dense haze and clouds | | 25000 | | | | | | | |
| 1350 | | | 270 | | 51-40N 08-10E | | | 25000 | | | | | | | |
| 1357 | | | 250 | | 51-45N 07-51E | | | 25000 | | | | Dense haze | | | |
| 1402 | | | 300 | | 51-49N 07-28E | (Brief view of Dortmund- Rine Canal.) | | 25000 | | | | | | | |
| 1409 | | | 210 | | 51-55N 07-00E | | | 21000 | | | | | | | |
| 1412 | | | 240 | | Borken | | | 21000 | | | | | | | |
| 1418 | | | 160 | | Wesel, 2000 ft | | | 21000 | | | | | For accurate tracking list, moderate number. | | |
| 1433 | | | 220 | | Weert | | | 21600 | | | | | Many hits in our plane | | |
| 1445 | | | 282 | | 50-57N 04-51E | | | 20600 | | | | | | | |
| 1459 | | | 270 | | Ohent | | | 15000 | | | | | | | |
| 1511 | | | 260 305 | | 51-09N 02-41E | Coast out | | 13500 | | | | | | 20 | 1531 |
| 1532 | | | 360 | | 51-57N 01-40E | | | 8500 | | | | | | | |
| 1552 | | | 260 | | Great Yarmouth | | | 500 | | | | | | | |
| 1559 | | | 260 | | Norwich. Nearly collected with other 401st ships | | | 500 | | | | | | | |
| 1616 | | | | | Pickingham, Landed | | | | | | | | | | |

I certify that this is a true copy of the Deputy Lead Navigator's Log. (Log of Lead Navigator lost.)

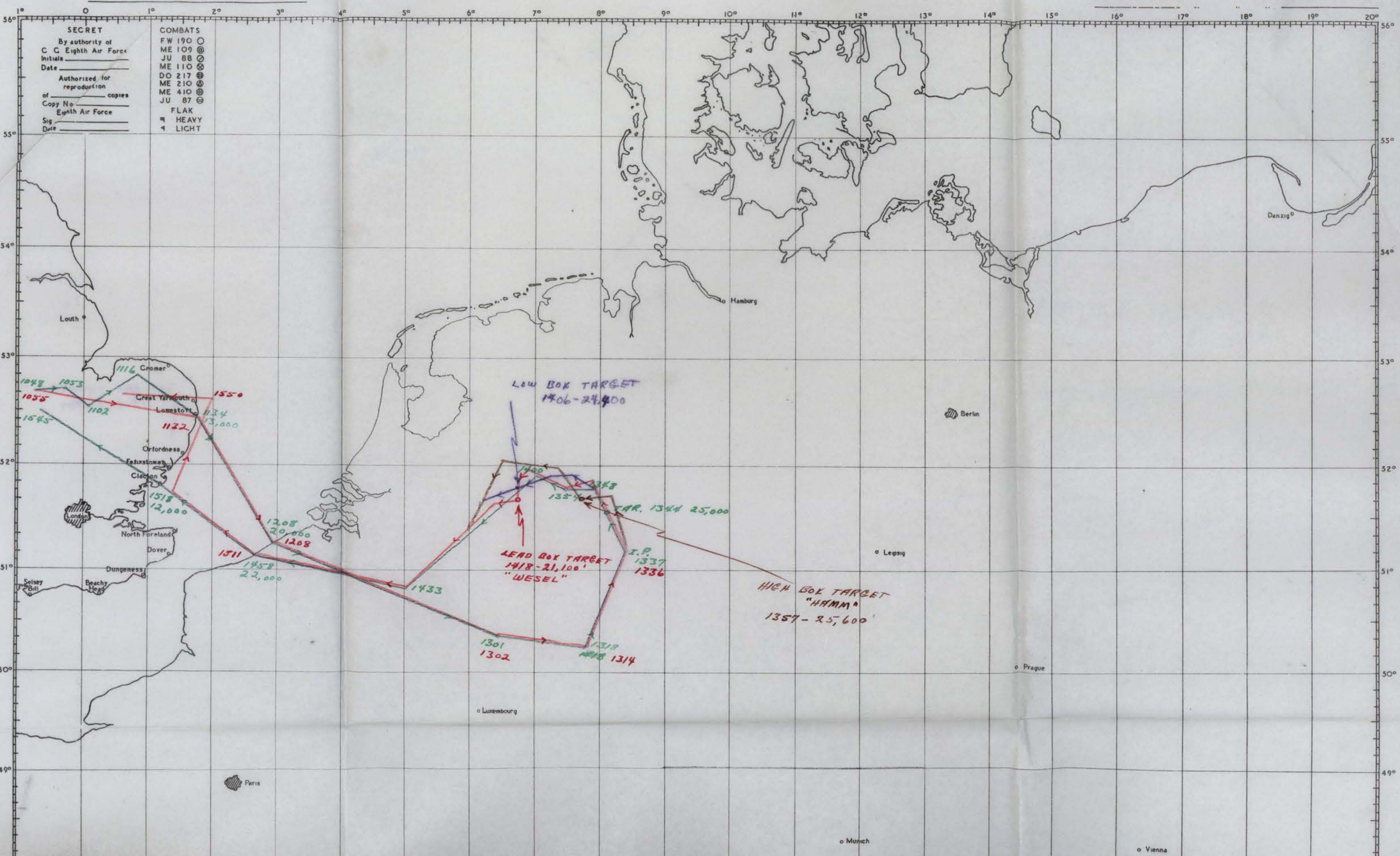
H. W. DOWMAN
Colonel, A. C.
Commanding Officer, 401st Bomb Gp.

TRACK CHART

DATE Sept. 19-44

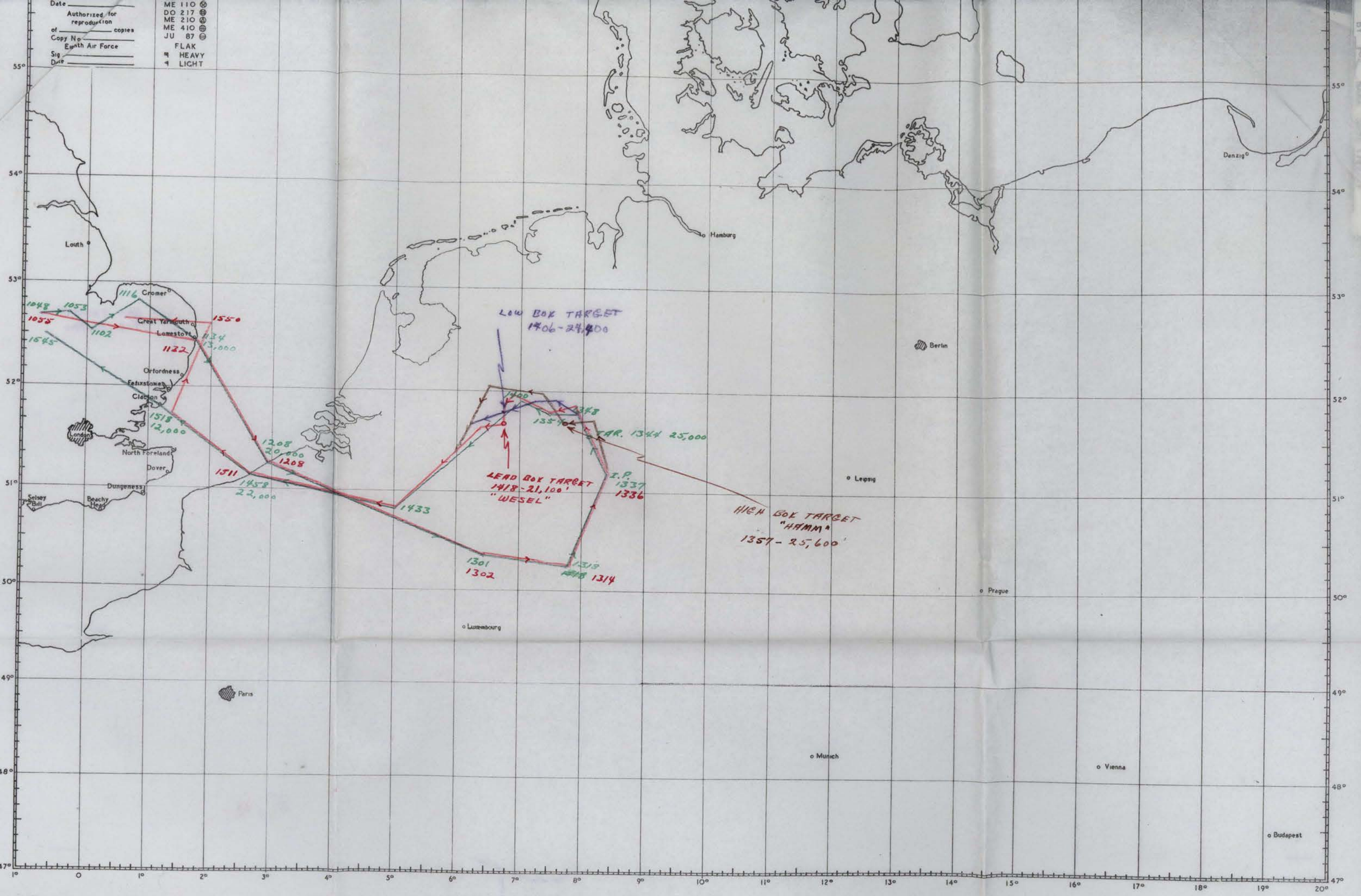
TARGETS
PRIMARY Hamm, Germany

Green ROUTE FOLLOWED BY Briefed Course
Red Lead Box
Brown High Box
Purple Low Box



Date _____
 Authorized for reproduction _____
 of _____ copies
 Copy No. _____
 Eighth Air Force
 Sig _____
 Date _____

ME 110 ⊗
 DO 217 ⊗
 ME 210 ⊗
 ME 410 ⊗
 JU 87 ⊗
 FLAK
 HEAVY
 LIGHT



DECLASSIFIED PER 6032 BY 6032

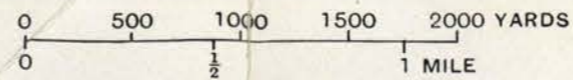
Target No.
6 (d) (vi) 5

RAILWAY MARSHALLING YARD, Etc. — HAMM (GERMANY)

Illustration No.
6 (d) (vi) 5/5

Illustration No.
6 (d) (vi) 5/5

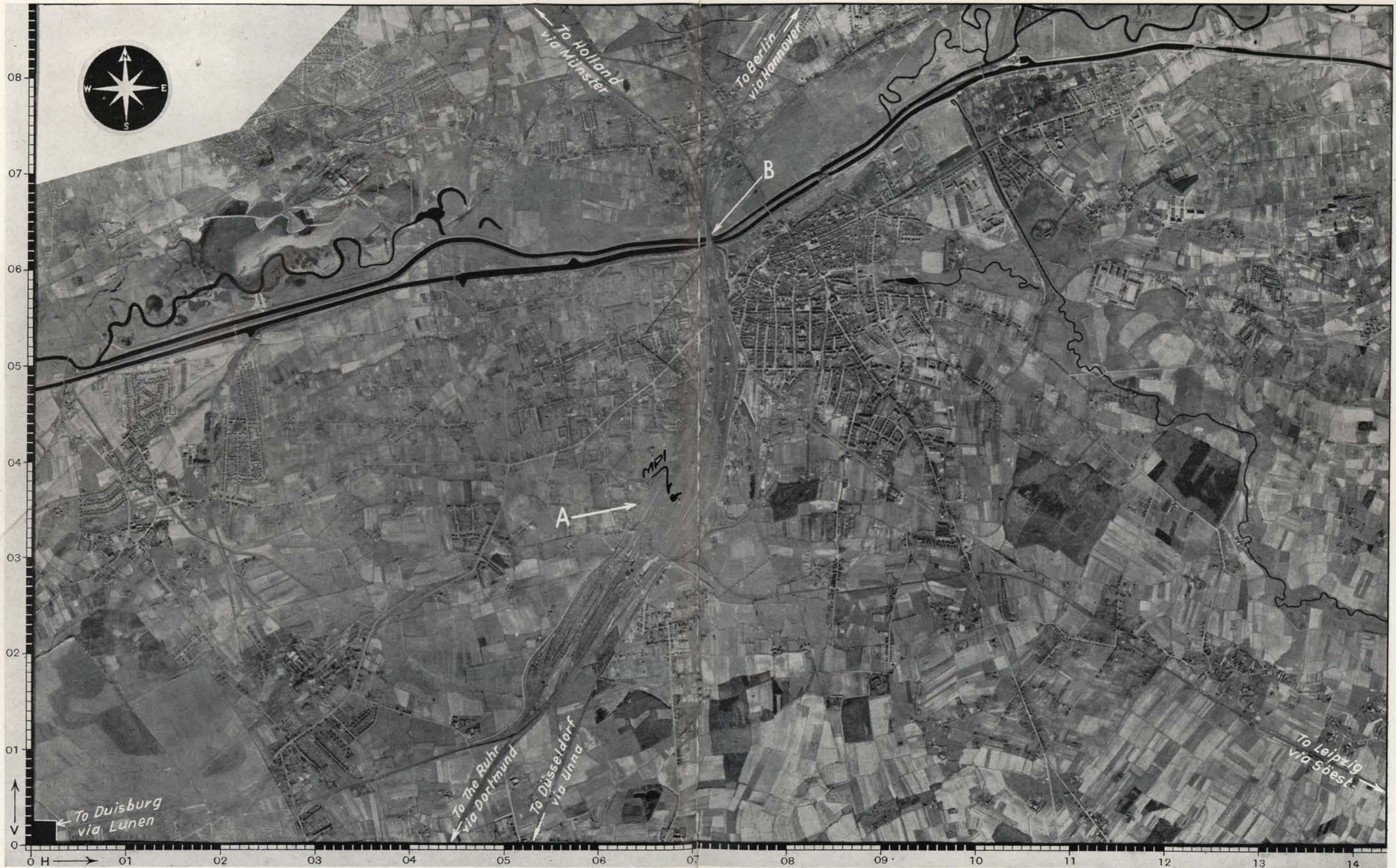
Secondary



Photographed 1943

(1 : 32,000)

Issued April 1944



A. RAILWAY MARSHALLING YARD.
B. RAILWAY BRIDGE OVER LIPPE LATERAL CANAL.

A.I.3c(1)

TYPE A

DECLASSIFIED PER NND 245202
BY [signature] NARA DATE 1/22/11

U.D.A.G. FORM
 12 E. Modified
 1-9-44 401st BG APO 557

LEAD BOX
COMBAT BOMBING FLIGHT RECORD

BOMBARDIER Capt Meadville DATE 19 Sept 1944
 PILOT Lt. Col Brown TAKE OFF 0927
 NAVIGATOR Lt. Kron AIRPLANE _____
 WING 94th C GROUP 401st SQDN 613th LANDED 1016
 OBJECTIVE Wesel, Germany (MPI) _____
 METHOD OF ATTACK _____ x _____
 _____ Individual Flight Squadron Group Wing
 NUMBER A/C IN GROUP 9 COMPOSITE GROUP _____
 DEFLECTION AND RANGE SIGHTING GROUP Lead A/C COMPOSITE GROUP _____
 NUMBER A/C DROPPING BOMBS BY OWN SIGHTING OPERATION: 1 A/C
 BOMBS, TYPES AND SIZES 500# M 64 FUSING: NOSE 1/10 TAIL 1/40
 BOMBS, TYPES AND SIZES _____ FUSING: NOSE _____ TAIL _____
 NUMBER OF BOMBS LOADED 106 x 500# M 64 RELEASED 106
 INFORMATION AT RELEASE POINT:
 Altitude of Target 330 Temp Aloft: Metro -30 Actual -19
 True Altitude above target 21600 Mag Head, order 344 Actual 166
 Ind. Altitude 21100 True Heading 172
 Pressure alt of target -266 Drift, Est 3L Actual 5R
 Altimeter setting 29.92 True Track 177
 C.I.A.S. 150 I.A.S. 150 Actual Range ---
 G.S. Est 227 Actual 227 B.S. Type M-9
 Wind Direc Metro 50 Actual -- Time of Release 1418 1/2
 Wind Veloc. Metro 11 1/2 Actual -- Intervalometer Setting Salvo
 D.S. 137.7 Trail 54 ATF -- Length of Bombing Run 2 min
 Tan. D.A. Est .49 Actual .49 C-1 Pilot Yes A-5 _____
 Mean Temp: Metro -3.5 Actual -3.5 Manual Pilot _____
 Type of Release: Lead A/C Salvo Type of Release: Other A/C Salvo

W.D.A.G. FORM
12 E. Modified
1-9-44 401st BG AFM 807

LOW BOX
COMBAT BOMBING FLIGHT RECORD

BOMBARDIER Major Pickoff DATE 19 Sept 1944

PILOT Lt. Carroll TAKE OFF 0929

NAVIGATOR Lt. Kaiser AIRPLANE 780

WING 94th C GROUP 401st SQDN 614th LANDED 1617

OBJECTIVE Unknown, T of O (MPI)

METHOD OF ATTACK Individual Flight Squadron Group Wing

NUMBER A/C IN GROUP 12 COMPOSITE GROUP

DEFLECTION AND RANGE SIGHTING GROUP Lead A/C COMPOSITE GROUP

NUMBER A/C DROPPING BOMBS BY OWN SIGHTING OPERATION: 1 A/C

BOMBS, TYPES AND SIZES 500# M 64 FUSING: NOSE 1/10 TAIL 1/40

BOMBS, TYPES AND SIZES FUSING: NOSE TAIL

NUMBER OF BOMBS LOADED 144 x 500# M 64 RELEASED 144

INFORMATION AT RELEASE POINT:

| | |
|---|--|
| Altitude of Target <u>330</u> | Temp Aloft: Metro <u>-29</u> Actual <u>-25</u> |
| True Altitude above target <u>24970</u> | Mag Head, order <u>344</u> Actual <u>241</u> |
| Ind. Altitude <u>24400</u> | True Heading <u>246</u> |
| Pressure alt of target <u>-266</u> | Drift, Est <u>3L</u> Actual <u>---</u> |
| Altimeter setting <u>29.92</u> | True Track <u>---</u> |
| C.I.A.S. <u>150</u> I.A.S. <u>150</u> | Actual Range <u>---</u> |
| G.S. Est <u>224</u> Actual <u>----</u> | B.S. Type <u>M-9</u> |
| Wind Direc Metro <u>50</u> Actual <u>---</u> | Time of Release <u>1406</u> |
| Wind Veloc. Metro <u>11 1/2</u> Actual <u>---</u> | Intervalometer Setting <u>Salvo</u> |
| D.S. <u>127.3</u> Trail <u>58</u> ATF <u>---</u> | Length of Bombing Run <u>2min</u> |
| Tan. D.A. Est <u>.49</u> Actual <u>---</u> | C-1 Pilot <u>Yes</u> A-5 |
| Mean Temp: Metro <u>-3.5</u> Actual <u>-3.5</u> | Manual Pilot |
| Type of Release: Lead A/C <u>Salvo</u> | Type of Release: Other A/C <u>Salvo</u> |

W.D.A.G. FORM
12 E. Modified
1-9-44 401st BG APO

HIGH BOX
COMBAT BOMBING FLIGHT RECORD

BOMBARDIER Lt. Browne DATE 19 Sept 1944

PILOT Capt McCord TAKE OFF 0956

NAVIGATOR Lt. Fishbeck AIRPLANE 153

WING 94 C GROUP 401st SQDN 612 th LANDED 1610

OBJECTIVE Hamm, Germany (MPI)

METHOD OF ATTACK Individual Flight Squadron Group wing **x**

NUMBER A/C IN GROUP 12 COMPOSITE GROUP

DEFLECTION AND RANGE SIGHTING GROUP Lead A/C COMPOSITE GROUP

NUMBER A/C DROPPING BOMBS BY OWN SIGHTING OPERATION: 1 A/C

BOMBS, TYPES AND SIZES 500# M 64 FUSING: NOSE 1/10 TAIL 1/40

BOMBS, TYPES AND SIZES FUSING: NOSE TAIL

NUMBER OF BOMBS LOADED 143x500# M 64 RELEASED 143

INFORMATION AT RELEASE POINT:

| | |
|---|--|
| Altitude of target <u>330</u> | Temp Aloft: Metro <u>-31</u> Actual <u>-29</u> |
| True Altitude above target <u>26536</u> | Mag Head, order <u>344</u> Actual <u>276</u> |
| Ind. Altitude <u>25600</u> | True Heading <u>282</u> |
| Pressure alt of target <u>-266</u> | Drift, Est <u>10L</u> Actual <u>4R</u> |
| Altimeter setting <u>29.02</u> | True Track <u>286</u> |
| C.I.A.S. <u>150</u> I.A.S. <u>150</u> | Actual Range <u>13680</u> |
| G.S. Est <u>230</u> Actual <u>218</u> | E.S. Type <u>M-9</u> |
| Wind Direc Metro <u>90</u> Actual <u>225</u> | Time of Release <u>1357</u> |
| Wind Veloc. Metro <u>40</u> Actual <u>23</u> | Intervalometer Setting <u>MAX 150 ft</u> |
| D.S. <u>122.8</u> Trail <u>.62</u> ATP <u>43.14</u> | Length of Bombing Run <u>1 min</u> |
| Tan. D.A. Est <u>.515</u> Actual <u>.47</u> | C-1 P12 <u>Yes</u> A-5 |
| Mean Temp: Metro <u>-3.5</u> Actual <u>-3.5</u> | Manual Pilot |
| Type of Release: Lead <u>Salvo</u> | Type of Release: Other A/C <u>1150 ft</u> |

HEADQUARTERS
401ST BOMBARDMENT GROUP (H)
Office of the Communications Officer
AAF Sta 128, APO 557

J-A-2

Reference Field Order 499

~~19~~ SEPTEMBER 1944

SUBJECT: Communications Report, Operational Mission No 145

TO : Commanding Officer, 401st Bomb Gp (H), AAF Sta 128, APO 557.

SECTION ONE - USE OF RADIO NAVIGATIONAL AIDS

- | | |
|-----------------------------|----------------------------------|
| 1. VHF/DF Bearings: | 5. Radio Beacons used: |
| to 401st A/G <u>1</u> | Splashers <u>UNKNOWN</u> |
| to other A/C <u>0</u> | Fixed Beacons <u>UNKNOWN</u> |
| 2. HF/DF Bearings <u>0</u> | Bunchers <u>UNKNOWN</u> |
| 3. MF/DF Fixes <u>0</u> | 6. Total A/C using Gee <u>37</u> |
| 4. Distress Action <u>0</u> | TOTAL A/C USING H2X <u>3</u> |
| | Maximum Fix <u>5030N 0521E</u> |

SECTION TWO - REPORTED EQUIPMENT DEFICIENCIES

- | | |
|---------------------|------------------------|
| 1. Liaison <u>0</u> | 5. Interphone <u>1</u> |
| 2. Command <u>0</u> | 6. Gee <u>0</u> |
| 3. VHF <u>1</u> | 7. IPF <u>0</u> |
| 4. Compass <u>0</u> | 8. Others <u>0</u> |

SECTION THREE - REMARKS

- BROKEN SAFETIED WIRES:
- 790 - REQUESTED LANDING RUNWAY & INSTRUCTIONS FROM BPE VHF/DF STATION
- 236 - REQUESTED QDM FROM DEENETHORPE VHF/DF STATION
- 6113 - REQUESTED QDM FROM DEENETHORPE VHF/DF STATION

HAROLD M. KENNARD, JR.
Capt, Air Corps,
Gp Comm O.

High Box



R 9478 CASIMANKEBODEN-ORFELI

(SAV-401C/630-1)(19-9-44)(2674-1-25600)HAMM

22 Sept 44

FLAK REPORT

Mission to HAMM, GERMANY 19 September 1944.

1. Flak was observed at 1354 hours from the vicinity of Hamm. Lead box encountered moderate, tracking type flak over Wesel which was accurate for altitude and fairly good for deflection.

613th BOMBARDMENT SQUADRON (H)
 OFFICE OF THE OPERATIONS OFFICER
 AAF STATION 128, APO 557

19 September 1944

5
 M

LOADING LIST

| PLANE NO. | DUTY | RANK | LAST NAME | FIRST NAME | MI |
|--------------------|------------|----------|-----------|------------|--------|
| PFF 033 (614th) | P | 1st LT. | COLEMAN | EDWARD | W. |
| | CP | LT. COL. | BROWN | EDWIN | W. |
| | N | 1st LT. | KRON | HORACE | E. |
| | N | 2nd LT. | KORETSKY | HARRY | (NMI) |
| | B | CAPT. | MEADVILLE | HARRY | W. |
| | RO | T/SGT. | CARMON | CALVIN | A. |
| | TT | T/SGT. | LINDHOLM | ALVIN | T. |
| | TG | 2nd LT. | DONALSON | JEFF | N. |
| | WG | S/SGT. | ANDERSON | EDDIE | W. |
| | ✓ | 1st LT. | FINE | STANLEY | (NMI) |
| PFF 947 (612th) | P | 1st LT. | LOCKHART | RUSSELL | R. |
| | CP | 2nd LT. | HAM | PORTER | R. |
| | N | 1st LT. | GRILLEY | ROBERT | L. |
| | B | 1st LT. | LEWIS | GEORGE | R. |
| | MIC. OPER. | 2nd LT. | STRONG | WILLIAM | W. |
| | RO | T/SGT. | SCHLAEGEL | OTTO | H. |
| | TT | T/SGT. | FYLES | CHARLES | E. |
| | TG | S/SGT. | MILLION | LAWRENCE | C. |
| | WG | S/SGT. | NULL | LLOYD* | J. |
| | 44-6132 | P | 1st LT. | JETTER | ARTHUR |
| CP | | 1st LT. | CAIN | ROBERT | W. |
| N | | 1st LT. | HIRSH | HARRY | (NMI) |
| B | | S/SGT. | FETTERS | WILLIAM | J. |
| RO | | T/SGT. | SHERMAN | LEO | (NMI) |
| TT | | T/SGT. | NELSON | RICHARD | D. |
| BT | | S/SGT. | KNAPP | MARTIN | F. |
| TG | | S/SGT. | BAIER | JOHN | J. |
| WG | | S/SGT. | ROBERSON | ROBERT | E. |
| 44-6113 | | P | 2nd LT. | ANNIS | ROMIE |
| | CP | 2nd LT. | CLARK | FORREST | E. |
| | N | 2nd LT. | MADDEN | BERNARD | J. |
| | B | 2nd LT. | JENSEN | JAMES | B. |
| | RO | SGT. | WALKER | LEWIS | L. |
| | TT | SGT. | CORLISS | JOHN | M. |
| | BT | S/SGT. | PEREZ | FRANK | W. |
| | TG | SGT. | JOHNSON | LESLIE | C. |
| | WG | SGT. | BROOKS | GEORGE | E. |
| | 42-102947 | P | 2nd LT. | KECK | ROBERT |
| CP | | F/O | ISTEL | LAWRENCE | A. |
| N | | F/O | FREEMAN | HOLLIS | W. JR. |
| B | | F/O | SHEPARD | SAMUEL | (NMI) |
| RO | | SGT. | ENGLER | RICHARD | H. |
| TT | | SGT. | STOEGER | LEONARD | V. |
| BT | | SGT. | NORR | ELWOOD | W. |
| TG | | SGT. | METCALF | WILLIAM | T. |
| WG | | SGT. | NACTIGAL | FRED | G. |

LOADING LIST - 19 Sept. 1944 CONT'D

| PLANE NO. | DUTY | RANK | LAST NAME | FIRST NAME | MI |
|-----------|--------|-------------------------|----------------------------|--|-------|
| 43-38187 | P | 2nd LT. | DOUGLAS | LUTHER | N. |
| | CP | 2nd LT. | GRAYTOR | FREDERICK | A. |
| | N | 2nd LT. | HAVRAN | EDWARD | F. |
| | B | 2nd LT. | GORMAN | WILLIAM | L. |
| | RO | SGT. | SHEETZ | JOHN | H. |
| | TT | SGT. | LEWIS | RAYMOND | G. |
| | BT | SGT. | AGLIATA | TONY | A. |
| | TG | SGT. | CAIRO | LOUIS | P. |
| WG | SGT. | CHANCE | FUFORD | D. | |
| 44-6313 | P | 1st LT. | BUDD | CLAYTON | R. |
| | CP | 2nd LT. | MAC LEOD | REGINALD | L. |
| | N | 2nd LT. | KLOTZ | BERNARD | L. |
| | B | S/SGT. XXXXX | KISSACK | JOHN | D. |
| | RO | S/SGT. | SKALA | FRANKLIN | C. |
| | TT | S/SGT. | OLIVER | ERNEST | S. |
| | BT | SGT. | DESTROISMAISON | ARTHUR | (NMI) |
| | TG | SGT. | ROGEN | HARLAN | (NMI) |
| WG | SGT. | MURRAY | DALE | S. | |
| 42-38267 | P | 1st LT. | KEELING | CHARLES | W. |
| | CP | MAJ. (401st) | DE JONCKHERE | F. | T. |
| | N | 2d Lt. | RUSH | JAMES | M. |
| | B | 2d Lt. | JARDINE | JOHN | H. |
| | RO | T SGT. | KNOX | ROBERT | C. |
| | TT | T SGT. | RIEST | MAURICE | C. |
| | BT | S SGT. | KENAGY | LLOYD | C. |
| | TG | S SGT. | QUIST | HAROLD | (NMI) |
| WG | S SGT. | QUESS | WILLIAM | J. | |
| 4231591 | P | 2d Lt. | XXXXXXXX CARSON | XXXXXXXX FRANK (NMI) JR. XXX | |
| | CP | 2d Lt. | MOE | MORRIS | E. |
| | N | 2d Lt. | WATSON | HENRY | T. |
| | B | 2d Lt. | BUCHER | WILLIAM | (NMI) |
| | RO | SGT. | HECK | GERALD | L. |
| | TT | S SGT. | MC GEHEE | RAY | E. |
| | BT | S SGT. | LEE | WILLIAM | R. |
| | TG | SGT. | GERALDI | JOSEPH | J. |
| WG | SGT. | JAMES | LLEWELLYN | (NMI) | |
| 42-37947 | P | 1st Lt. | LOCKHART | RUSSELL | R. |
| | CP | 2d Lt. | HAM | PORTOR | R. |
| | N | 1st Lt. | GRILLEY | ROBERT | L. |
| | B | 1st Lt. | LEWIS | GEORGE | R. |
| | HD V | 2d Lt. | STRONG | WILLIAM | W. |
| | RO | T SGT. | SCHLAEGEL | OTTO | M. |
| | TT | T SGT. | FYLES | CHARLES | E. |
| | HE WG | S SGT. | NULL | LLOYD | J. |
| TG | S SGT. | MILLION | LAWRENCE | C. | |
| HE | | | | | |
| 42-97931 | P | 2d Lt. | CAMPBELL | ROBERT | B. |
| | CP | 2d Lt. | RANDLE | RICHARD | W. |
| | N | 2d Lt. | HURLEY | JIM | D. |
| | B | 2d Lt. | ISHAM | LAWRENCE | B. |
| | RO | S SGT. | CHALUPZYNSKI | VINCENT | M. |
| | TT | SGT. | JUSTICE | ANDREW | C. |
| | BT | SGT. | BOSTIAN | AUDREY | I. |
| | TG | SGT. | SMITH | JAMES | A. |
| WG | SGT. | HARLEN | JAMES | J. | |

R.E. Spaw

OFFICE OF THE OPERATIONS OFFICER
612th Bombardment Squadron (H)
401st Bombardment Group (H)

19 September 1944

SUBJECT : Loading List

TO : Operations Officer, 401st Bombardment Group (H),
AAF Station # 128, APO 557.

A/C 448153

| | | | |
|-----|--------------------------|---------|-------|
| P | McCord, Richard D. | Captain | 612th |
| CP | McMurray, John R. | 1st Lt. | " |
| N | Fishbeck, Howard D. | 1st Lt. | " |
| B | Browne, Joseph E. | 1st Lt. | " |
| RO | Kirkman, Charles C. | T Sgt | " |
| TTG | Strickland, Z. D. | T Sgt | " |
| MO | Howard, Robert W. | 1st Lt. | " |
| TG | Edmonds, Elroy (NMI) | S Sgt | " |
| WG | Formalrie, Thomas J. Jr. | S Sgt | " |

A/C 42-37632

| | | | |
|-----|--------------------------|---------|-------|
| P | Hocking, Bert E. | 1st Lt. | 612th |
| CP | Merritt, William R. | 2nd Lt. | " |
| N | Harris, Elliott S. | 1st Lt. | " |
| B | Chayka, William J. | 2nd Lt. | " |
| RO | Moore, Donald J. | T Sgt | " |
| TTG | Cannon, James W. | T Sgt | " |
| BTG | Swope, Donald M. | S Sgt | " |
| TG | Thomas, Ernest H. | S Sgt | " |
| WG | Garrett, Milton (NMI) Jr | S Sgt | " |

A/C 43-37790

| | | | |
|-----|---------------------|---------|-------|
| P | Bonney, Roy H. | 1st Lt. | 612th |
| CP | Jolley, Edward R. | 2nd Lt. | " |
| N | Olsen, John B. | 2nd Lt. | " |
| B | Souder, William M. | S Sgt | " |
| RO | Pettinga, Paul S. | T Sgt | " |
| TTG | Lenzen, Ben (NMI) | T Sgt | " |
| BTG | Peters, Winfield E. | S Sgt | " |
| TG | Wallace, Robert W. | Sgt | " |
| WG | Dill, Donald D. | S Sgt | " |

A/C 42-106992

| | | | |
|-----|---------------------|---------|-------|
| P | Maxwell, Charles T. | 1st Lt. | 612th |
| CP | McLeod, Lucien P. | 2nd Lt. | " |
| N | Billman, James K. | 2nd Lt. | " |
| B | O'Brien, Eugene B. | S Sgt | " |
| RO | Searcy, Marion E. | T Sgt | " |
| TTG | Thomas, Robert L. | T Sgt | " |
| BTG | Lamoureux, Duane A. | S Sgt | " |
| TG | Welborn, Luther B. | S Sgt | " |
| WG | Bunn, Charles T. | Sgt | " |

A/C 42-39993

| | | | |
|-----|-----------------------|---------|-------|
| P | Gibson, Roger C. | 1st Lt. | 612th |
| CP | Atkinson, William A. | 1st Lt. | " |
| N | Brand, George C. | 1st Lt. | " |
| B | Kemler, Arden C. | 2nd Lt. | " |
| RO | Heikkinen, Earl R. | T Sgt | " |
| TTG | Williamson, Joseph R. | T Sgt | " |
| BTG | Roethler, Roland V. | S Sgt | " |
| TG | King, Francis E. Jr. | S Sgt | " |
| WG | Phelps, Durwood W. | S Sgt | " |

A/C 42-96938

| | | | |
|-----|----------------------|---------|-------|
| P | Lawrence, Louis Jr. | 2nd Lt. | 612th |
| CP | Stein, William I. | 2nd Lt. | " |
| N | Hyman, Nathan W. | 2nd Lt. | " |
| B | Burge, Charles R. | 2nd Lt. | " |
| RO | Huskey, Curtis O. | S Sgt | " |
| TTG | Graupman, Richard C. | S Sgt | " |
| BTG | O'Neal, Hayes B. Jr. | Sgt | " |
| TG | Avezedo, Philbert B. | Sgt | " |
| WG | Harold, Lloyd B. | Sgt | " |

A/C 42-102398

| | | | |
|-----|-----------------------|---------|---------|
| P | Aiken, Charles H. | 1st Lt. | 612th |
| CP | Harb, Wallace S. | Capt. | Gp. Hq. |
| N | Osborne, Charles R. | 1st Lt. | 612th |
| B | Benton, David (NMI) | 2nd Lt. | " |
| RO | Barrow, John D. | S Sgt | " |
| TTG | Peterson, Harry A. | S Sgt | " |
| BTG | Geal, Ernest A. | Sgt | " |
| TG | Fenton, Lawrence E. | Sgt | " |
| WG | Potter, Howard J. Jr. | Sgt | " |

A/C 42-107039

| | | | |
|-----|-------------------------|---------|-------|
| P | Harlan, Thomas Jr. | 2nd Lt. | 612th |
| CP | Thorne, Walter W. | 2nd Lt. | " |
| N | Tarr, Charles (NMI) Jr. | 2nd Lt. | " |
| B | Pepper, James D. | S Sgt | " |
| RO | Robinson, Paul D. | T Sgt | " |
| TTG | Lee, Reed L. | T Sgt | " |
| BTG | Smith, Floyd G. | S Sgt | " |
| TG | Munford, John V. | S Sgt | " |
| WG | Zaragoza, Albert R. | S Sgt | " |

A/C 42-37628

| | | | |
|-----|---------------------|---------|-------|
| P | Jones, Dale G. | 2nd Lt. | 612th |
| CP | Tompkins, David G. | 1st Lt. | " |
| N | Wishnoff, Aaron | 2nd Lt. | " |
| B | Moran, Robert E. | 2nd Lt. | " |
| RO | Madrzyk, Chester P. | Col. | " |
| TTG | Derry, Harrison W. | Sgt | " |
| BTG | Rogerts, Charles G. | Col. | " |
| TG | Watters, Kenneth O. | Col. | " |
| WG | Serafino, Ernest A. | Col. | " |

A/C 42-31087

| | | | |
|-----|-----------------------|---------|-------|
| P | Cromer, Joseph L. | 2nd Lt. | 612th |
| CP | Trout, Ralph W. | F/O | " |
| N | Phillips, Michael T. | 2nd Lt. | " |
| B | Waldhoff, Jack G. | 1st Lt. | " |
| RO | Goodman, Marin B. | T Sgt | " |
| ETG | Stott, Douglas W. | S Sgt | " |
| BTG | Coffin, Robert J. Jr. | Sgt | " |
| TG | Villagio, Vincent V. | Sgt | " |
| WG | Clark, Eugene F. | Sgt | " |

RE

SIX HUNDRED AND FIFTEENTH BOMBARDMENT SQUADRON (H)

FOUR HUNDRED AND FIRST BOMBARDMENT GROUP (H)

Office of the Operations Officer

AAF - Sta - 128 - APO - 557

19 September 1944

SUBJECT: Landing List:

TO : Operations Officer, 401st Bomb Gp (H), Sta - 128, APO - 557.

1. Following is the list of Combat Crews participating in today's mission.

PLANE 43-38159

| POST | RANK | LAST (NAME) | FIRST | (MI) | SQUADRON |
|------|---------|-------------|----------|-------|----------|
| P | 2nd Lt. | Oss | Herbert | L. | 615th |
| CP | 2nd Lt. | Hayes | Thomas | A. | " |
| N | 2nd Lt. | Green | William | H. | " |
| B | 2nd Lt. | Mencow | William | H. | " |
| RO | Opl. | Brereton | William | E. | " |
| TT | S/Sgt. | Cook | Byron | K. | " |
| BT | Sgt. | Mourouky | Theodore | (MCI) | " |
| TO | Sgt. | Heardon | John | J. | " |
| PO | S/Sgt. | Dunn | John | G. | " |

PLANE 44-6146

| | | | | | |
|----|---------|------------|----------|----|-------|
| P | 2nd Lt. | Cooper | Louis | E. | 615th |
| CP | 2nd Lt. | Spannel | Kaye | H. | " |
| N | 2nd Lt. | Ellis | George | O. | " |
| B | 2nd Lt. | D'Agostine | Benedict | R. | " |
| RO | S/Sgt. | Sherril | Rascom | B. | " |
| TT | T/Sgt. | Sexton | Myron | W. | " |
| BT | Pvt. | Maroncelli | Harry | J. | " |
| TO | S/Sgt. | Lawrence | Ralph | L. | " |
| PO | S/Sgt. | Gue | Charles | H. | " |

PLANE 42-51486

| | | | | | |
|----|---------|------------|---------|-------|-------|
| P | 2nd Lt. | McKay | George | W. | 615th |
| CP | 2nd Lt. | Higgs | William | (MCI) | " |
| N | 2nd Lt. | Rainey | James | L. | " |
| B | 2nd Lt. | Hecker | Robert | L. | " |
| RO | Opl. | Richardson | Samuel | T. | " |
| TT | Opl. | Burlier | William | H. | " |
| BT | T/Sgt. | Luther | Richard | (MCI) | " |
| TO | Opl. | Brunson | Wade | P. | " |
| PO | Opl. | Camisano | Ralph | J. | " |

PLANE 43-107113

| | | | | | |
|----|---------|-----------|---------|-------|-------|
| P | 2nd Lt. | Sullivan | Paul | J. | 615th |
| CP | 2nd Lt. | Cox | Edward | A. | " |
| N | 2nd Lt. | Basserman | James | R. | " |
| B | 2nd Lt. | Ransoy | John | R. | " |
| RO | S/Sgt. | Brown | George | (MCI) | " |
| TT | S/Sgt. | Raciti | Anthony | E. | " |
| BT | Sgt. | Daley | John | P. | " |
| TO | Sgt. | Storn | James | L. | " |
| PO | Sgt. | Cross | William | L. | " |

LOADING LIST (Continued)

PLANE # 43-37861

| | | | | | |
|----|---------|------------|---------|----|-------|
| P | 2nd Lt. | Daves | Edward | H. | 615th |
| CP | 2nd Lt. | Crunk | Clayton | F. | " |
| N | 2nd Lt. | Menydie | Ralph | J. | " |
| B | 2nd Lt. | MacDougall | John | C. | " |
| RO | Sgt. | McKinney | Harold | C. | " |
| TT | S/Sgt. | Mayfield | William | R. | " |
| BT | Sgt. | Wheaton | Paul | J. | " |
| TG | Sgt. | Rollet | James | C. | " |
| FG | Sgt. | Crawford | Melvin | H. | " |

PLANE # 42-97804

| | | | | | |
|----|---------|-------------|--------|-------|-------|
| P | 2nd Lt. | Turk | Laurel | A. | 615th |
| CP | 2nd Lt. | Sincking | John | H. | " |
| N | 2nd Lt. | Cone | Allan | L. | " |
| B | 2nd Lt. | Moore | Max | L. | " |
| RO | T/Sgt. | Roberts | Melvin | L. | " |
| TT | Sgt. | Wieselthier | Simon | (MEX) | " |
| BT | Sgt. | Greenliffon | John | H. | " |
| TG | Cpl. | Veschio | Murray | H. | " |
| FG | Sgt. | Osborne | Peter | J. | " |

PLANE # 42-102674

| | | | | | |
|----|---------|----------|---------|----|-------|
| P | 2nd Lt. | Kochel | Michael | J. | 615th |
| CP | F/O | Callahan | Raymond | J. | " |
| N | 2nd Lt. | Ainley | Allan | B. | " |
| B | 2nd Lt. | Hoffman | Lloyd | A. | " |
| RO | S/Sgt. | Cusino | Joseph | A. | " |
| TT | Sgt. | Benson | Charles | H. | " |
| BT | Sgt. | Kelly | Thomas | W. | " |
| TG | Sgt. | Gobbs | Kenneth | W. | " |
| FG | Sgt. | Wofford | Dewey | B. | " |

PLANE # 42-51077

| | | | | | |
|----|---------|----------|---------|-------|-------|
| P | 2nd Lt. | Udy | John | (MEX) | 615th |
| CP | 2nd Lt. | Hookaday | Billy | B. | " |
| N | 2nd Lt. | Yonel | Daley | F. | " |
| B | Sgt. | Jencks | Robert | L. | " |
| RO | S/Sgt. | Knowles | Harry | G. | " |
| TT | S/Sgt. | Young | Jack | R. | " |
| BT | Sgt. | Albert | Russell | H. | " |
| TG | Sgt. | Wann | Albert | H. | " |
| FG | Sgt. | Oviatt | Earl | D. | " |

PLANE # 43-39126

| | | | | | |
|----|---------|-----------|---------|-------|-------|
| P | 2nd Lt. | Stegemann | Charles | W. | 615th |
| CP | 2nd Lt. | Walter | Albert | C. | " |
| N | F/O | McCaslin | Clayton | W. | " |
| B | 2nd Lt. | Schultz | John | J. | " |
| RO | T/Sgt. | McKenna | Joseph | (MEX) | " |
| TT | T/Sgt. | Mais | John | R. | " |
| BT | S/Sgt. | Tushurins | Joseph | J. | " |
| TG | S/Sgt. | Waar | Martin | C. | " |
| FG | S/Sgt. | Sullivan | Robert | H. | " |

SIX HUNDRED AND FOURTEENTH BOMBARDMENT SQUADRON (H)
 FOUR HUNDRED AND FIRST BOMBARDMENT GROUP (H)
 Office of the Operations Officer

AAF Station # 128
 19 September 1944

SUBJECT: Loading List.

TO : Operations Officer, 401st Bomb Gp (H), AAF Station # 128, APO # 557.

1. Following is the list of Combat Personnel participating in today's Mission.

PLANE # 42-97780

| | | | |
|----|---------|------------------------|-------------------|
| P | 1st Lt. | GARROLL, TED D. | 614th Bomb Sq. |
| CP | 1st Lt. | LEASER, FREDERICK G. | " |
| N | 1st Lt. | KAISER, PAUL F. | " |
| B | Major | PICKOFF, JULIUS | 401st Bomb Gp Hqs |
| RO | T/Sgt. | Curtin, John W. | 614th Bomb Sq. |
| TT | S/Sgt. | Leuenberger, Arnold J. | " |
| BT | S/Sgt. | Reynolds, William H. | " |
| TG | S/Sgt. | Eaton, Earl E. | " |
| WG | S/Sgt. | Mell, Jack R. | " |

PLANE # 42-97145

| | | | |
|----|---------|----------------------|----------------|
| P | 1st Lt. | LERWICK, HOWARD P. | 614th Bomb Sq. |
| CP | 1st Lt. | JAEGER, ALBERT J. | " |
| N | 1st Lt. | NORTON WILLIAM | " |
| B | 2nd Lt. | HAGERTY, JAMES J. | " |
| RO | T/Sgt. | Volz, Bernard Jr. | " |
| TT | T/Sgt. | Findlay, Matthew R. | " |
| BT | S/Sgt. | James, Harold L. Jr. | " |
| TG | S/Sgt. | Schwiederek, John J. | " |
| WG | S/Sgt. | Healy, John L. | " |

PLANE # 42-102659

| | | | |
|-----|---------------|------------------------|---------------|
| P | 1st Lt. | KOVACH, JOHN W. | 614th Bomb Sq |
| CP | 1st Lt. | KELLAM, JAMES W. | " |
| N | 1st Lt. | COSELLI, FRANK J. JR | " |
| CTG | S/Sgt. | Horbatuck, Stepan | " |
| RO | T/Sgt. Pollar | Pollard, Omer S. | " |
| TT | T/Sgt. | Rouhseland, Willard J. | " |
| BT | S/Sgt. | Guest, Hollis D. | " |
| TG | S/Sgt. | Schmidt, Edward J. | " |
| WG | S/Sgt. | Maki, Arthur W. | " |

PLANE # 42-107151

| | | | |
|-------|---------|--------------------------------|---------------|
| P | 1st Lt. | SILVERSTEIN, HARRY P. | 614th Bomb Sq |
| CP | 2nd Lt. | PARQUAR, JOHN A. | " |
| N | 2nd Lt. | CRICKENBERGER, LAWRENCE H. JR. | " |
| CTG | S/Sgt. | Landwehr, Carl W. | " |
| RO | S/Sgt. | Gravel, Donald A. | " |
| TT | T/Sgt. | Dotson, Glenn | " |
| BT | S/Sgt. | Bergstrom, Donald E. | " |
| TG | S/Sgt. | Myers, Francis S. Jr. | " |
| WG | S/Sgt. | Dias, George V. | " |
| Obsr. | 1st Lt. | SUTHERLAND, DONALD J. | 614th Bomb Sq |

PLANE # 42097478

| | | | |
|-----|------------------------|---------------------|---------------|
| P | 2nd Lt. | HUBBELL, RICHARD S. | 614th Bomb Sq |
| CP | 2nd Lt. | GOULET, AMBROSE F. | " |
| N | 2nd Lt. | MOORE, GOERGE J. | " |
| CTG | NY/SGT CPL. | Beckman, Gordon L. | " |
| RO | Cpl. | Pool, Clyde W. | " |
| TI | Cpl. | Ross, Richard D. | " |
| BT | Cpl. | Revette, John L. | " |
| TG | Cpl. | Bell, W. S. | " |
| WG | Cpl. | Harris, John C. | " |

PLANE # 42-95602

| | | | |
|----|---------|--------------------------|---------------|
| P | 2nd Lt. | MAYS, HAL C. | 614th Bomb Sq |
| CP | F/O. | WHITMAN, PAUL F. | " |
| N | 2nd Lt. | KOSKI, MATTHEW F. | " |
| B | 2nd Lt. | SCHAEFER, ROBERT L. | " |
| TO | S/Sgt. | Dayes, Willie J. | " |
| TI | S/Sgt. | Gay, Clifford E. | " |
| BT | Sgt. | Cole, William I. | " |
| TG | Sgt. | Menacella, Joseph L. Jr. | " |
| WG | Sgt. | Wilson, Billy J. | " |

PLANE # 42-31663

| | | | |
|----|---------|------------------------|---|
| P | 2nd Lt. | BROWN, JOHN J. | " |
| CP | 2nd Lt. | MUSZALSKI, JOSEPH F. | " |
| N | 2nd Lt. | BROWN, JOHN D. | " |
| B | 2nd Lt. | SCHIEFER, WILLIAM F. | " |
| RO | T/Sgt. | Arellano, Gardicano D. | " |
| TI | T/Sgt. | Hoffman, Leon W. | " |
| BT | S/Sgt. | Wells, Clebrune D. | " |
| TG | S/Sgt. | Ellis, James | " |
| WG | S/Sgt. | Martin, Norman D. | " |

PLANE # 42-38256

| | | | |
|-----|---------|------------------------|---------------|
| P | 2nd Lt. | HAYES, LEONARD R. | 614th Bomb Sq |
| CP | 2nd Lt. | JAPLEY, WILLIE J. | " |
| N | 2nd Lt. | RHINERHART, WILLIAM E. | " |
| CTG | S/Sgt. | Kilgore, Edmund W. | " |
| RO | T/Sgt. | Tyree, Dorsey W. | " |
| TI | T/Sgt. | Dickson, Beattie B. | " |
| BT | S/Sgt. | Lawsence, Sterling B. | " |
| TG | S/Sgt. | Dreon, Louis L. | " |
| WG | S/Sgt. | Jackson, John A. | " |

PLANE # 42-107084

| | | | |
|----|---------|----------------------|---------------|
| P | 2nd Lt. | SISSON, NORMAN L. | 614th Bomb Sq |
| CP | 2nd Lt. | HOEMANN, EUGENE E. | " |
| N | 2nd Lt. | CROSSEN, LAVERN | " |
| B | 2nd Lt. | PICKER, NATHAN | " |
| RO | S/Sgt. | Haluck, Andrew S. | " |
| TI | Sgt. | Carter, Peter J. | " |
| BT | Sgt. | Stevens, Calvin J. | " |
| TG | Cpl. | Ritchie, Francis T. | " |
| WG | S/Sgt. | Gardner, Gilbert, G. | " |

Loading List (Cont)

PLANE # 42-58330

| | | | |
|-----|---------|------------------------|----------------|
| P | 2nd Lt. | JAMES, ROBERT W. | 614th Bomb Sq. |
| CP | 2nd Lt. | GROSSMANN, ROBERT M. | " |
| N | 2nd Lt. | MORRIS, GERALD A. | " |
| CTG | Cpl. | Miller, Henry N. | " |
| RO | Cpl. | Hopkins, Frank E. | " |
| TT | Cpl. | Scatchard, Roger N. | " |
| BT | Cpl. | Keivens, William J. | " |
| TG | Cpl. | Newman, Donald F. | " |
| WG | Cpl. | Pennington, William C. | " |

For the Squadron Commander:

JOHN SCHULZ
1st Lt., Air Corps,
Actg Opns Officer.

BRIEFING NOTES

Mission to SOEST, GERMANY

19 September 1944

PRIMARY TARGET: The primary is the large Marshalling Yard at SOEST which can handle 4400 wagons per 24 hour period. Its primary importance at this time is that it is an important link in the system of supply of enemy forces opposing our airbourne operation in Holland. In addition to its present tactical importance, it is the main supplementary marshalling yard dealing with traffic to and from the Ruhr from central and eastern Germany.

SECONDARY TARGET:Secondary Target is the very large marshalling yards at Hamm, Germany, which have a capacity of 10,000 wagons per day. It is the largest yard in Germany dealing with general traffic and at present is another link in the supply system connected with German opposition to the abovementioned airborne operation.

RE

LAST RESORT: Any military objective, positively identified as being in Germany, and east of the strategic bomb line.

FIGHTER SUPPORT: 2 Gps - P-51, 1 GP - P-47: Same For 3rd BD

EPIDIASCOPE: Flak map. (Give over to lead bombardier) 1/250000; British Night Map, Photos, for both primary and secondary.

LAST MINUTE INT: One possible southbound convoy en route out.
All a/c throw out chaff 2 minutes before IP, continue 12 min.

SPECIALS: FW instructions.
Look for: a. Jet propelled a/c; b. Long range rockets.
Empty pockets.
PARACHUTE HARNESS, PHOTOS, DOG TAGS, G.I. SHOES, ESCAPE KIT?

DON'T MENTION THIS OR ANY OTHER TARGET!!!!!!

CONFIDENTIAL

OPERATIONAL ROUTE FORECAST

DATE 19 October 1964
 PERIOD 0830-1630 hrs
AG P BR HQ SOS 122929

| | A Base to 05 Deg East | B 05 Deg East to Target to alt 03 Deg East. | C 03 Deg East to Base | D |
|-------------------|---|---|---|--|
| WEATHER | Cloudy to overcast with haze and occasional light intermittent drizzle. | Partly Cloudy with Haze. | Cloudy with Haze | |
| CLOUDS | 8-10/10 -tratus in layers base 600-1000ft tops 7000ft 3-5/10 -trato-cumulus base 8000ft tops 10,000ft. 3-5/10 Alto-cumulus in isolated patches base 11,000ft tops 15,000ft. 3-5/10 Cirrostratus base 26-30,000ft. | 2-4/10 small Cumulus base 3000ft tops 5000ft. Nil Medium Cloud 3-5/10 Cirrostratus base 2-30,000ft. | REVERSE OF ROUTE OUT EXCEPT. 5-8/10 -trato-cumulus Plus small Cumulus base 2000ft tops 6-8000ft over England on return. | *****NOTE***** Nil Contrails below 27000ft Light Non-persistent Contrails at 21,000ft and dense persistent Contrails above 29,000ft. FOR TARGET PRESSURE ALTITUDE Add Target elevation to (MINUS) -266ft. |
| ICING | 10,000ft. NIL ICE | 10,000ft NIL ICE | 10,000ft NIL ICE | TARGET SEA LEVEL PRESSURE 30.21 inches |
| VISIBILITY | 1-2 miles locally 1000 yards becoming unlimited aloft. | Vertical Visibility 10 miles | Unrestricted Aloft becoming 4-6 miles on return. | |
| HEIGHT | DIRECTION VELOCITY | DIRECTION VELOCITY | DIRECTION VELOCITY | DIRECTION VELOCITY |
| SURFACE | Base to 05 Deg East 090 15 | 05 Deg East to Target 130 15 | Temperatures Plus 18 | |
| 5000 FT | 120 15 | 120 15 | Plus 10 | |
| 10000 FT | 110 20 | 130 15 | Plus 01 | |
| 15000 FT | 100 25 | 110 15 | -08 | |
| 20000 FT | 100 30 | 150 10 | -18 | |
| 25000 FT | 090 35 | 150 10 | -30 | |
| 30000 FT | 090 40 | 160 10 | -42 | |

BASE ALTIMETER SETTING 30.18 inches TARGET SURFACE TEMP plus 18 TARGET MEAN TEMP at 25,000ft -03.5
 TEMP. AT 25,000 FT. -30.0 TARGET SURFACE (PRESSURE-ALT) 26 -266ft

DECLASSIFIED PER NND 245003 BY 602 NARA DATE 1/22/11

HEADQUARTERS
401ST BOMBARDMENT GROUP (H)
Office of the Armament Officer
AAF Station 128

F-C-1

APO 557
17 Sept. 1944

SUBJECT: Armament Malfunction Mission Report.

TO : Commanding General, 1st Bombardment Division, APO 557.
ATTN: Division Armament Officer.

1. Date of Mission: 17 September 1944.
2. No gun malfunctions were reported.
3. No turret malfunctions were reported.
4. The following bombing equipment malfunctions were reported:
 - a. A/C #42-31662 brought back five (5) bombs due to a faulty A-2 Release. This release has been replaced.
 - b. A/C #42-97931 brought back ten (10) bombs due to linkage being out of adjustment. Proper adjustment has been made.
 - c. A/C #42-31485 brought back one (1) bomb on top inboard station due to intervalometer not being set up high enough.
 - d. A/C #42-107113 brought one bomb back due to intervalometer not being set up high enough.
 - e. A/C #42-102468 brought back ten (10) bombs due to a burned out RS-2 Selector Switch. This switch has been replaced.
 - f. A/C #42-31983 brought back fifteen (15) bombs in right bombay. Bombay selector switch was shorted out. This switch has been replaced.
 - g. A/C #42-31458 brought back twelve (12) bombs due to bombay selector switch not being turned on in one bombay. This A/C is equipped with the all-electric bomb release system.
5. There were twenty (20) aircraft equipped with the all-electric bomb release system participating in the mission.

SAM P. BROOMHALL, JR.,
1st Lt., Air Corps,
Group Armament Officer.

HEADQUARTERS
401ST BOMBARDMENT GROUP (H)
Office of the Engineering Officer
AAFStation 128

F-A-1

APO 557
17 September 1944

SUBJECT: Abortive Report

TO : Commanding Officer, 401st Bomb Group (H), APO 557
ATTN: Air Statistical Officer

1. The following aircraft aborted from the mission of 17 September 1944 due to the reasons stated:

a. A/C # 42-97600 - Returned early because of # 1 engine running rough. A ground check revealed that # 1 cylinder was not firing. The compression on all cylinders was normal, and there is no evidence of previous malfunction.

CHARLES W. HUNT
Capt., Air Corps,
Group Engineering Officer

LEAD

LT COL SEAWELL

17
18 Sept 44

Combat Flight Leader

Deputy Flight Leader

LT OAS

615 SQDN

612th SC JABWOCK
613th IN MACRO
614th IW GOLFCLUB
615th IY BUZZARD

LEWIS (SEAWELL)

SC E 8153

GRIMM

OAS

IY M 2674

IN Y 7600

*BP
Wong*

Low SQDN

Hi SQDN

KONZE

KOCHEL

IY P 8458

IY C 2468

TURK

DUCKWORTH

SOMBART

COOPER

IY D 8125

IY L 7551

IY B 1730

IY R 6146

SULLIVAN

IY J E 7113

UDY

CALLOWAY

IY A 1077

IY G 1983

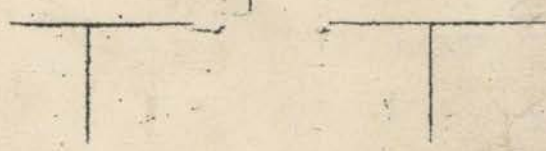
30x260 Frags (except 24 in ships with
2700 Gas

Gas 1900

SPARES

Gibson
~~MC KAY~~

IY E 8159



HIGH

LT COL BROWN

17
16 Sept 44

Combat Flight Leader

Data

LT BAKER

Deputy Flight Leader

613

SQDN

COLEMAN (BROWN)

612th SC JABWOCK

613th IN MACRO

614th IW GOLFCLUB

615th IY BUZZARD

IN C 1081

THOMASON

BAKER

IN E 7009

IN R 6113

How

SQDN

Hi

SQDN

LOCKHART

CARSON

IN F 6313

IN D 8187

HANSON

JENNINGS

JETTER

HILLESTADT

IN T 7736

IN A 8160

IN B 6132

IN K 1072

KEELING

IN M 8267

CAMPBELL

HOPIEY

IN Q 7931

IN U 7706

SPARES
ANNIS

IN S 2947

17

~~Combat Flight Leader~~ **GRUMAN** Date **16 Sept 1944**
~~Deputy Flight Leader~~ **BROWN**

LOW BOX

614th SQDN

612th SC JABWOCK
613th IN MACRO
614th IW GOLFCLUB
615th IY BUZZARD

CARROLL

IW R 7780

RUNDELL

BROWN

IW Z 8330

IW X 1863

LOW SQDN

LOW SQDN

GRUMAN

SILVERSTEIN

IW P 2012

IN J 1591

HUBBELL

HARASYM

CROZIER

COOKE

IW F 7395

IW G 7084

IW O 7602

IW A 7872

HAYES

IW M 8236

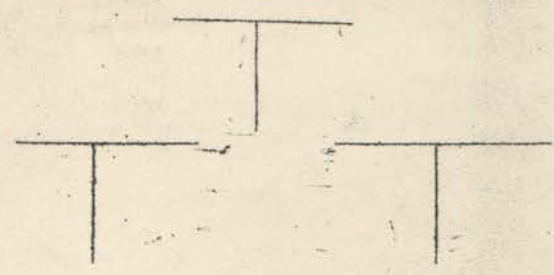
JAMES

SISSON

IW J 2659

IW S 6145

SPARES



Combat Flight Leader

Mc CORD

Date

18 Sept 1944

Deputy Flight Leader

SCHAUNAMAN

LEAD SQDN

McCORD (MAUPIN)

- 612th SC JABWOCK
- 613th IN MACRO
- 614th IW GOLFCLUB
- 615th IY BUZZARD

SC P 1891

HARLAN

SCHAUNAMAN

SC M 7039

SC O 7487

LOW SQDN

CURRIE

HI SQDN

KING T

SC J 7790

SC L 7632

THOMPSONS

HAYES

MAXWELL

LODEMAN

SC C 9993

SC A 7628

SC H 2398

SC B 1662

BURNS

SC D 6992

LAWRENCE

GROMER

SC S 7938

IY X 1485

SPARES

